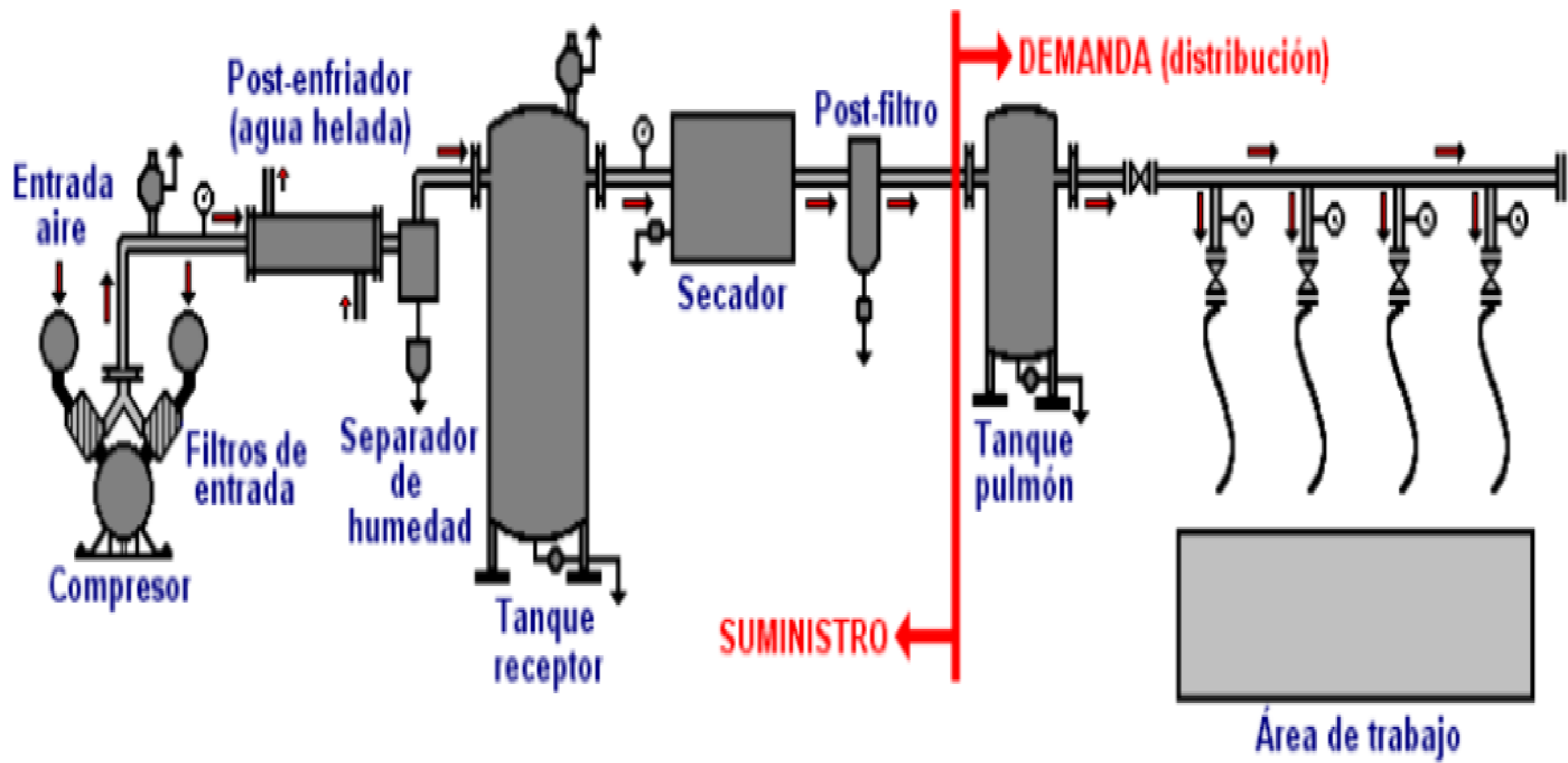
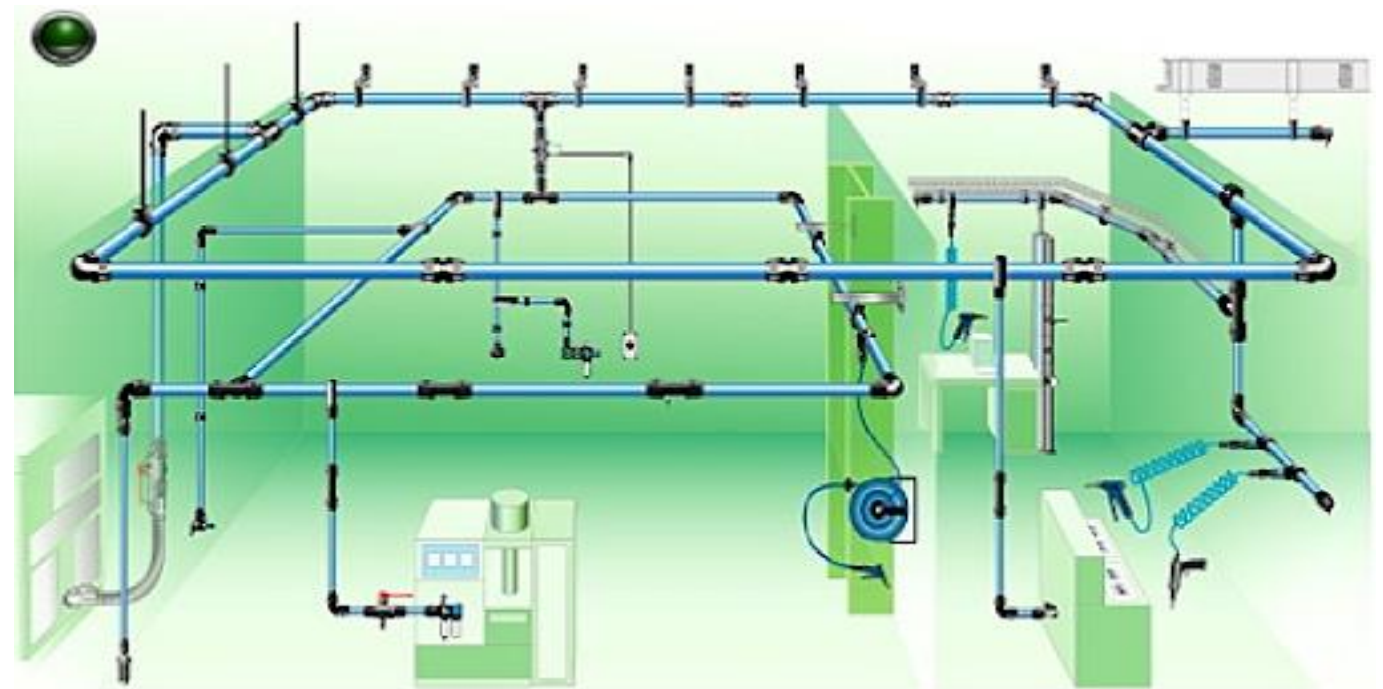
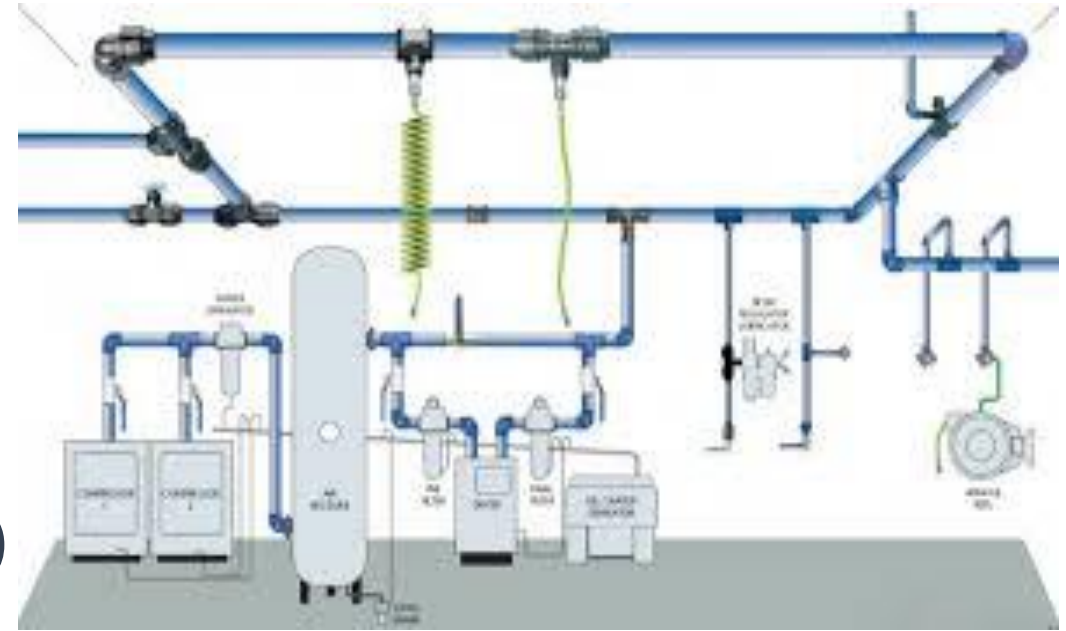


**ELECTRO-
NEUMÁTICA**

RED DE AIRE



- **POST ENFRIADOR**
 - **SEPARADOR HUMEDAD**
 - **TANQUE ALMACENAMIENTO**
 - **SECADOR**
 - **FILTROS**
- VARIAS ETAPAS**



Prefiltros.

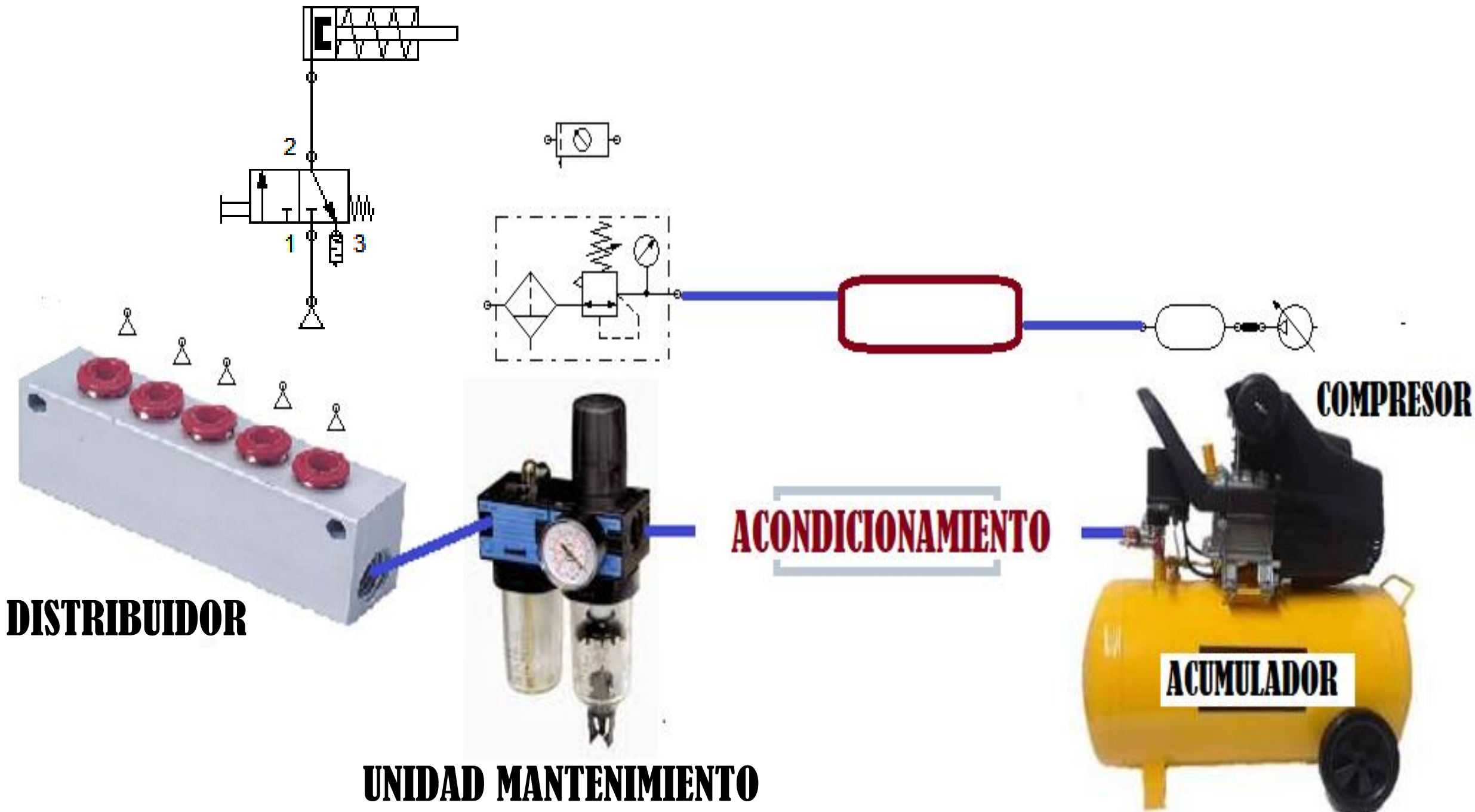
- Se instalan después de los compresores.
- Eliminar las **partículas gruesas** que podrían ser aspiradas por el compresor.
- **Capacidad coalescente.** Generalmente se ofrecen estos filtros, con la capacidad de eliminar una pequeña cantidad **de agua y aceite** al mismo tiempo que eliminan las partículas sólidas.

Filtros intermedios.

- Se instalan a continuación de los prefiltros
- **Filtros de partículas.** Son como los prefiltros, pero de un mayor grado de filtrado. **Partículas, agua y aceite.**
- **Filtros de carbón activo.** Eliminación de **vapores y olores** de aceite.
- **Filtros catalizadores.** Eliminación del **Monóxido de Carbono (CO)**. Utilizados en sistemas de respiración humana

Filtros finales.

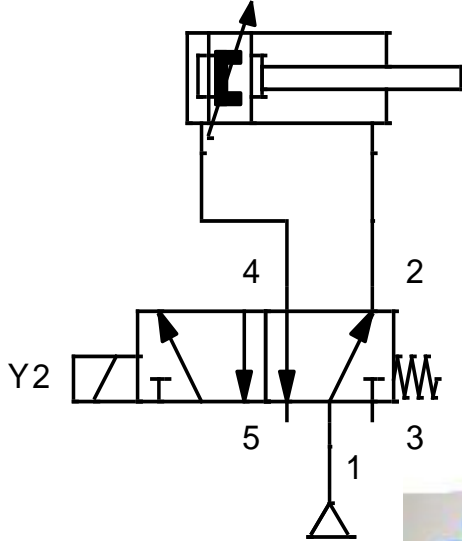
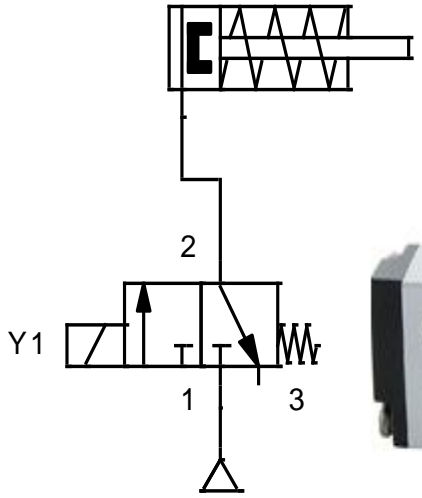
- Filtros específicos de protección del sistema antes de su uso final.
- **Unidades de mantenimiento.** Están formados por un **filtro de partículas** y un **regulador de presión**, y, si se requiere, un lubricador.
- **Filtros bactericidas.** Eliminación de determinadas bacterias en el aire comprimido. Muy utilizados en aplicaciones medicinales o en laboratorios.



**CIRCUITOS
ELECTRO-
NEUMATICOS**

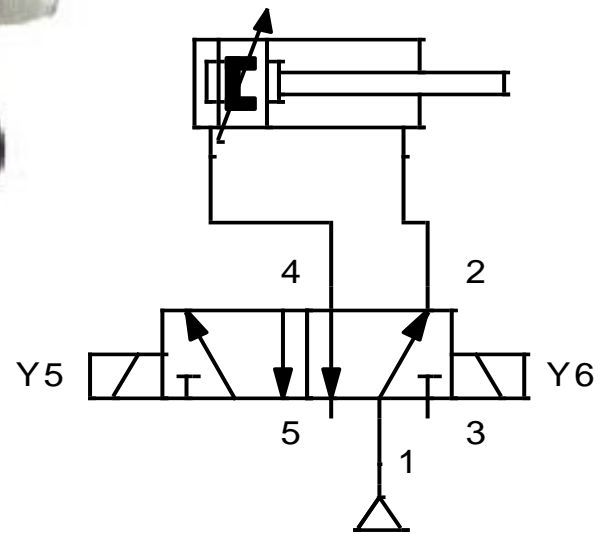
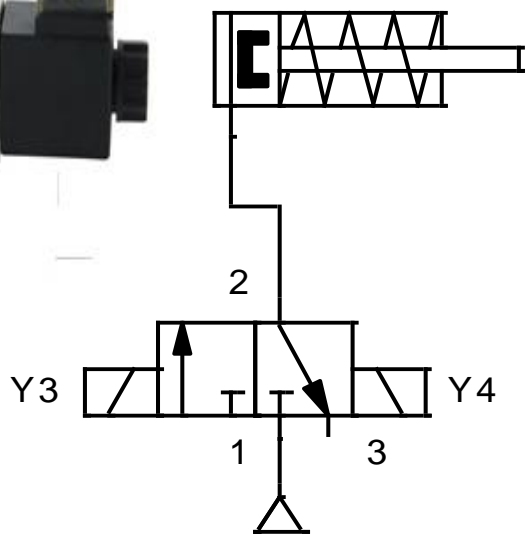
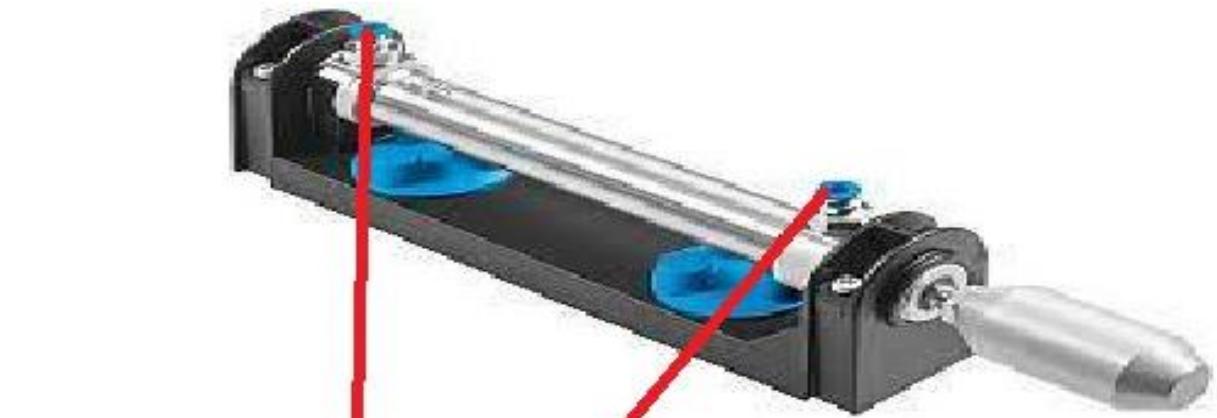
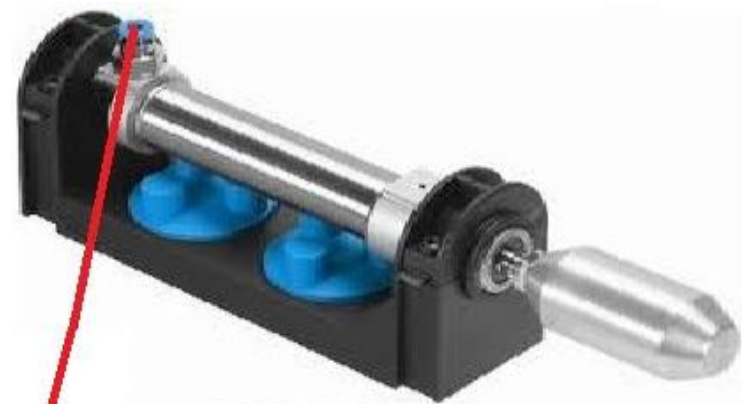
0

ELECTROVALVULA MONOSTABLE

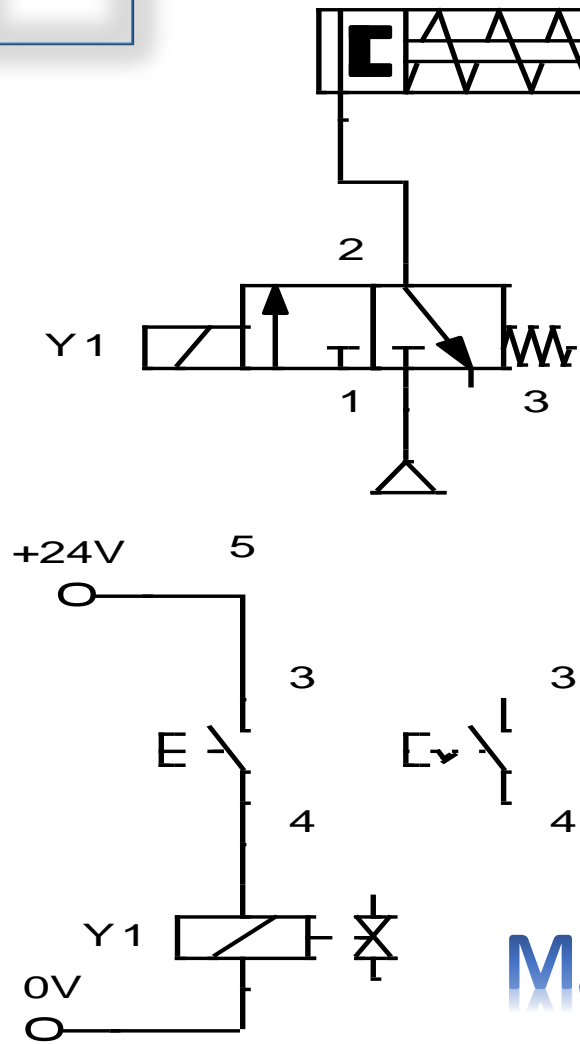


0

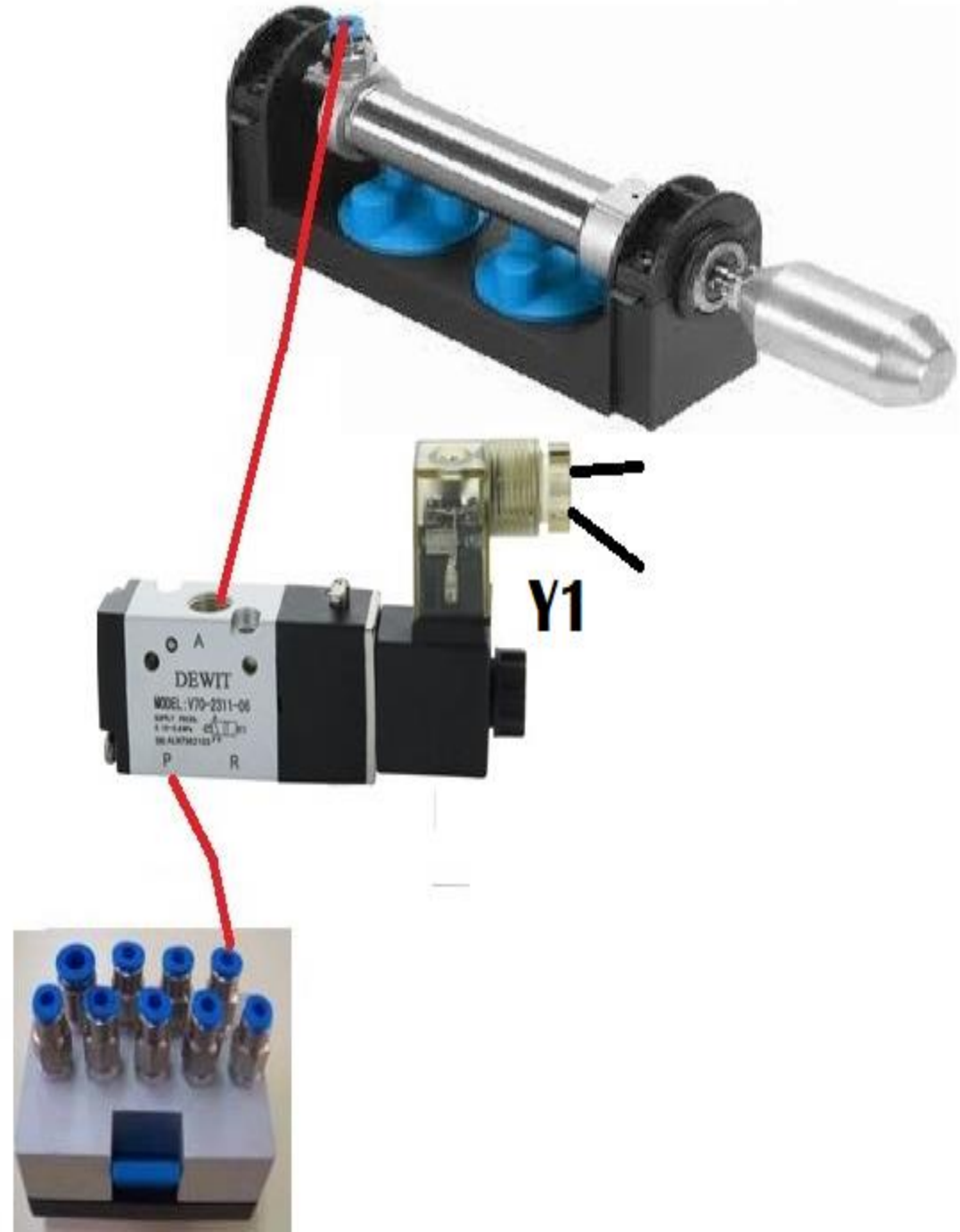
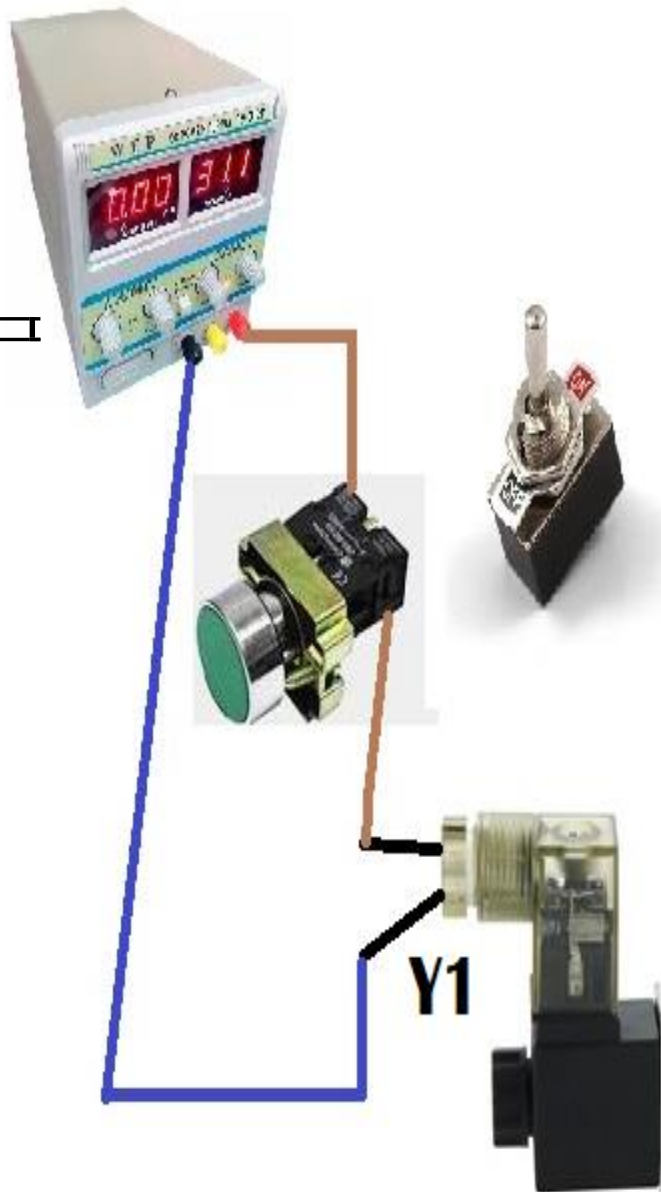
ELECTROVALVULA BIESTABLE



1

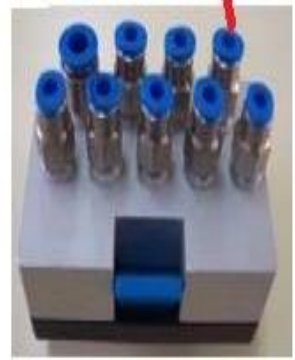
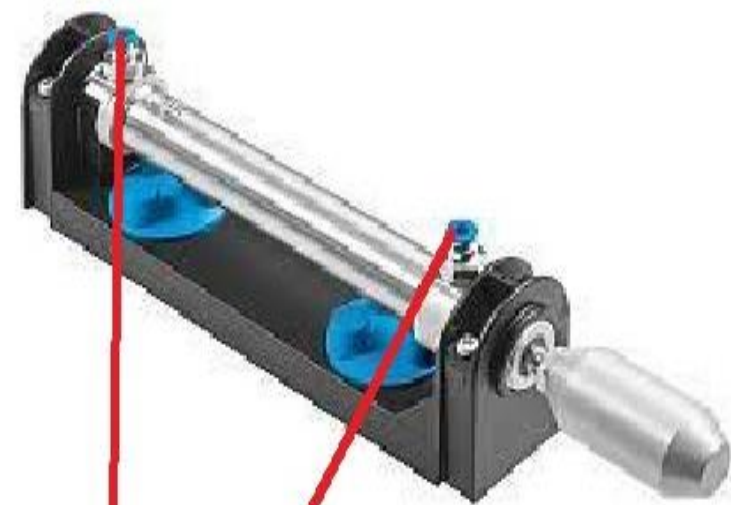
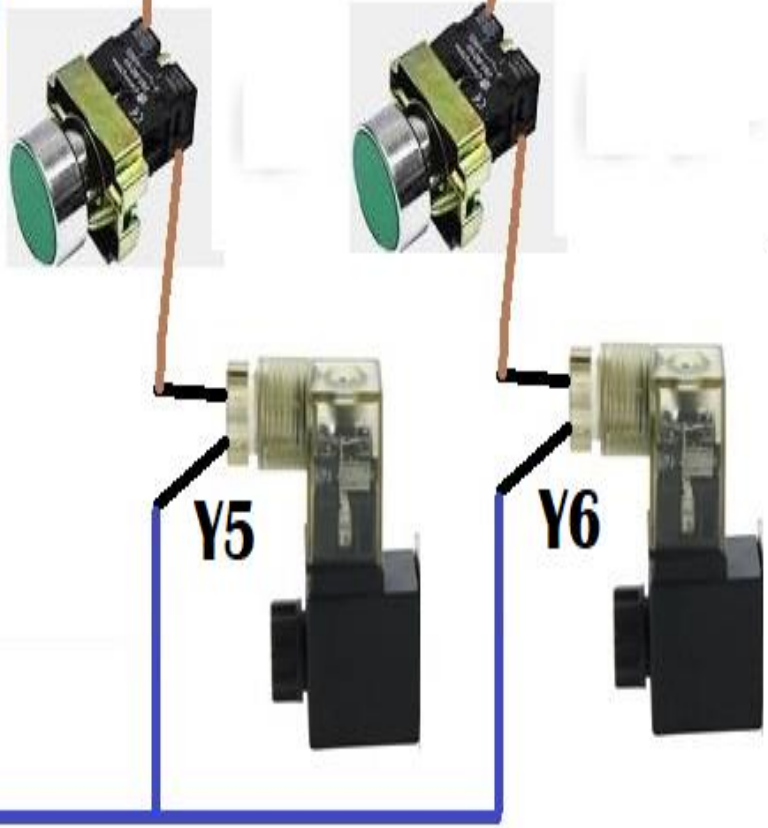
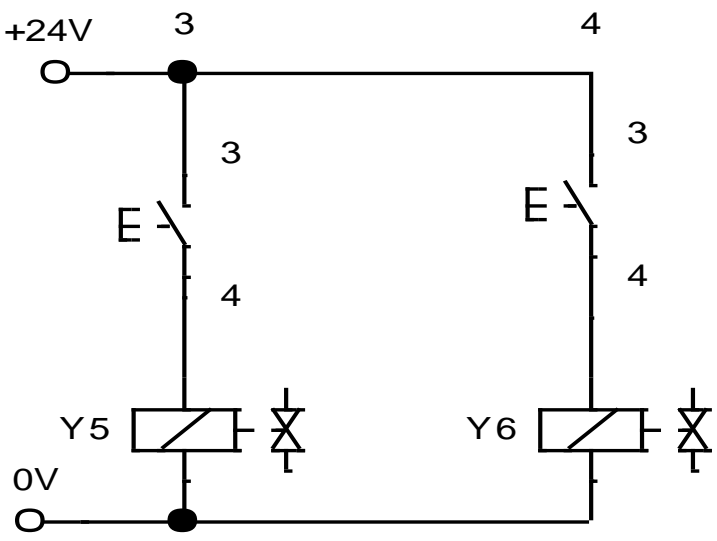
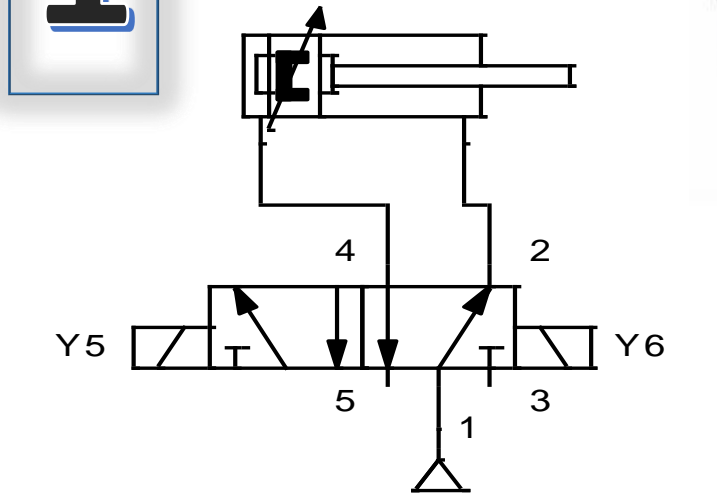


MANDO DIRECTO



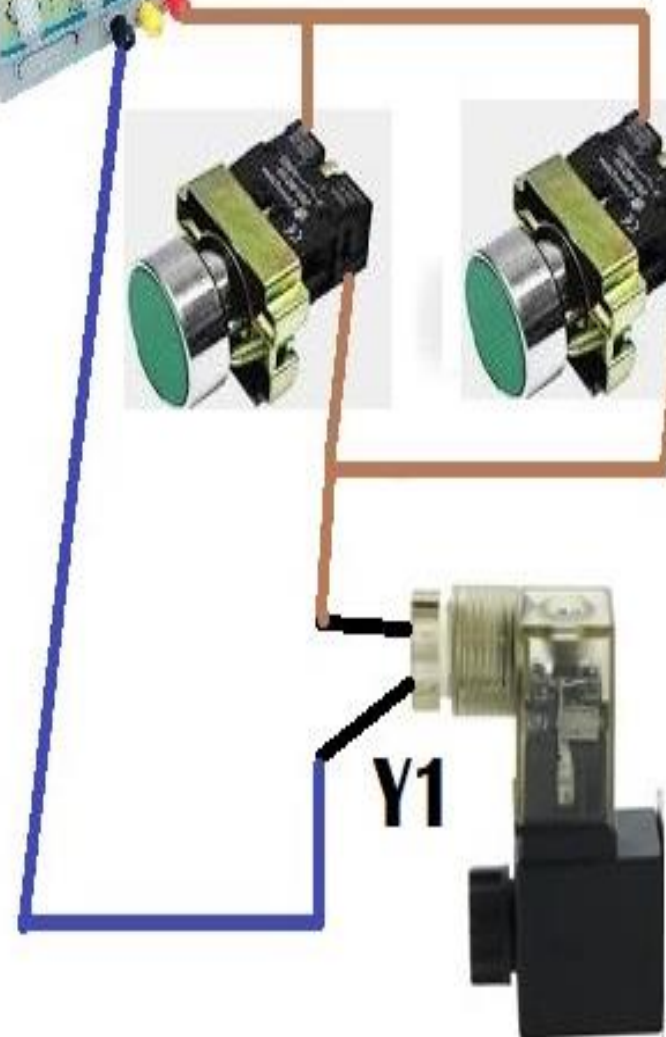
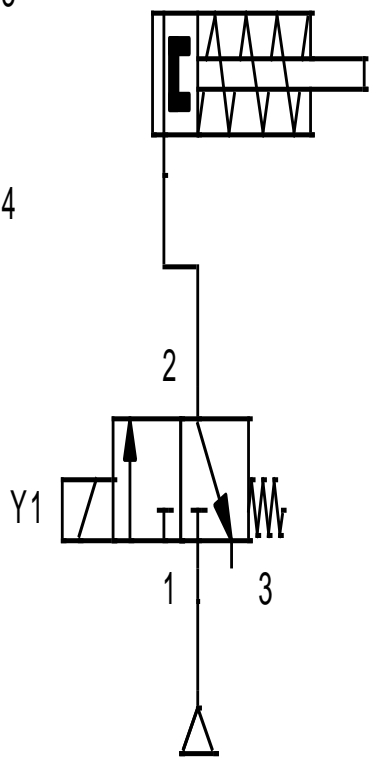
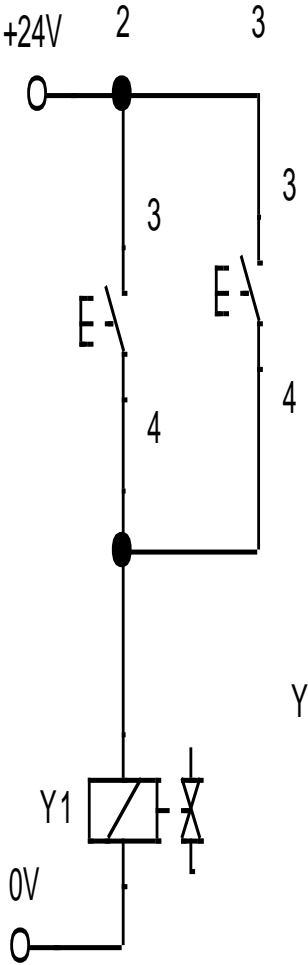
1

MANDO DIRECTO



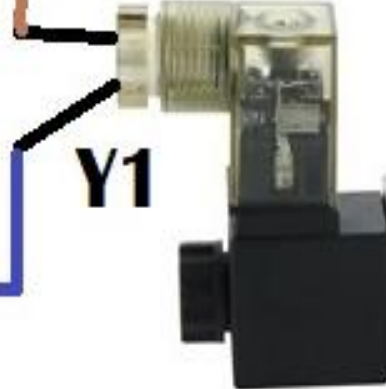
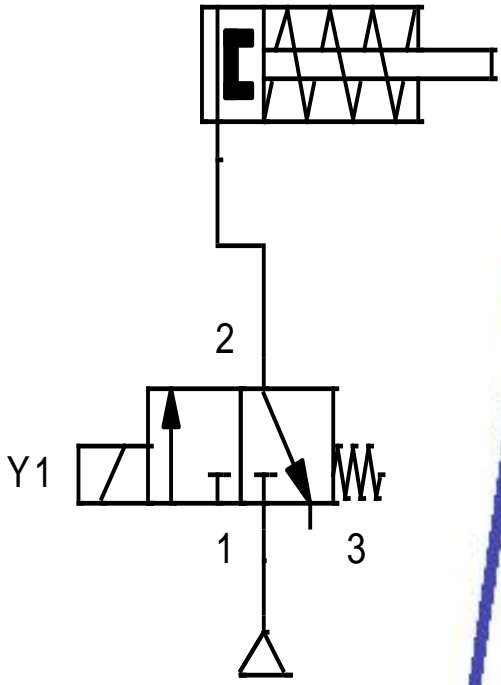
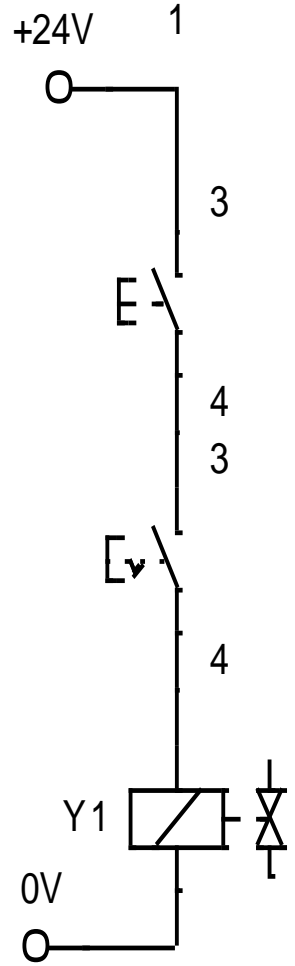
2

CONEXIÓN OR SELECTOR



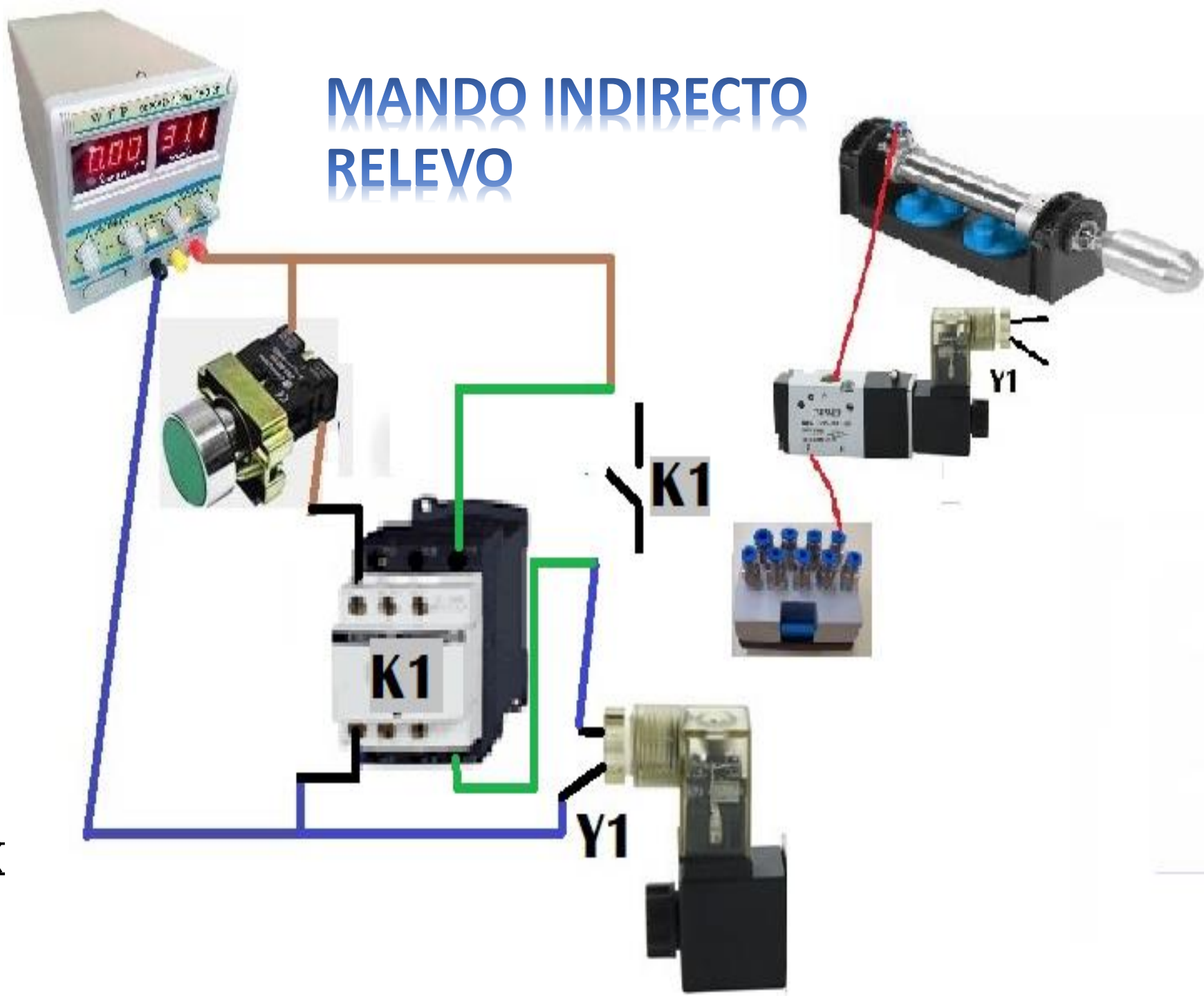
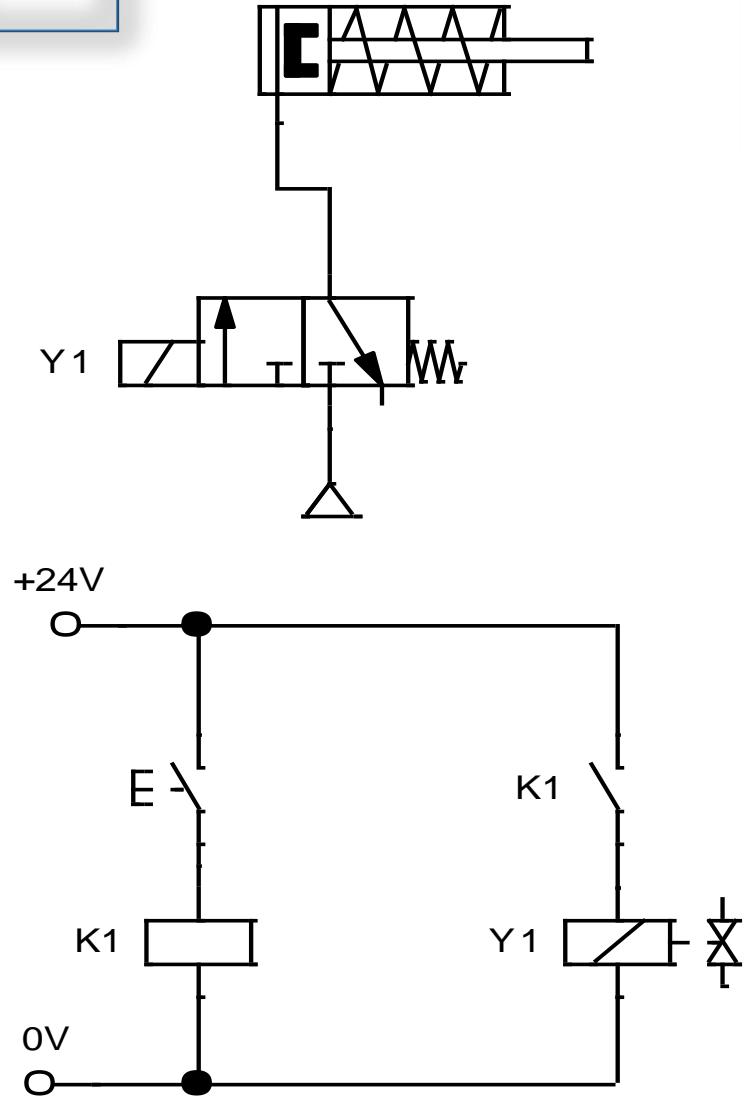
2

CONEXIÓN AND SIMULTANEIDAD



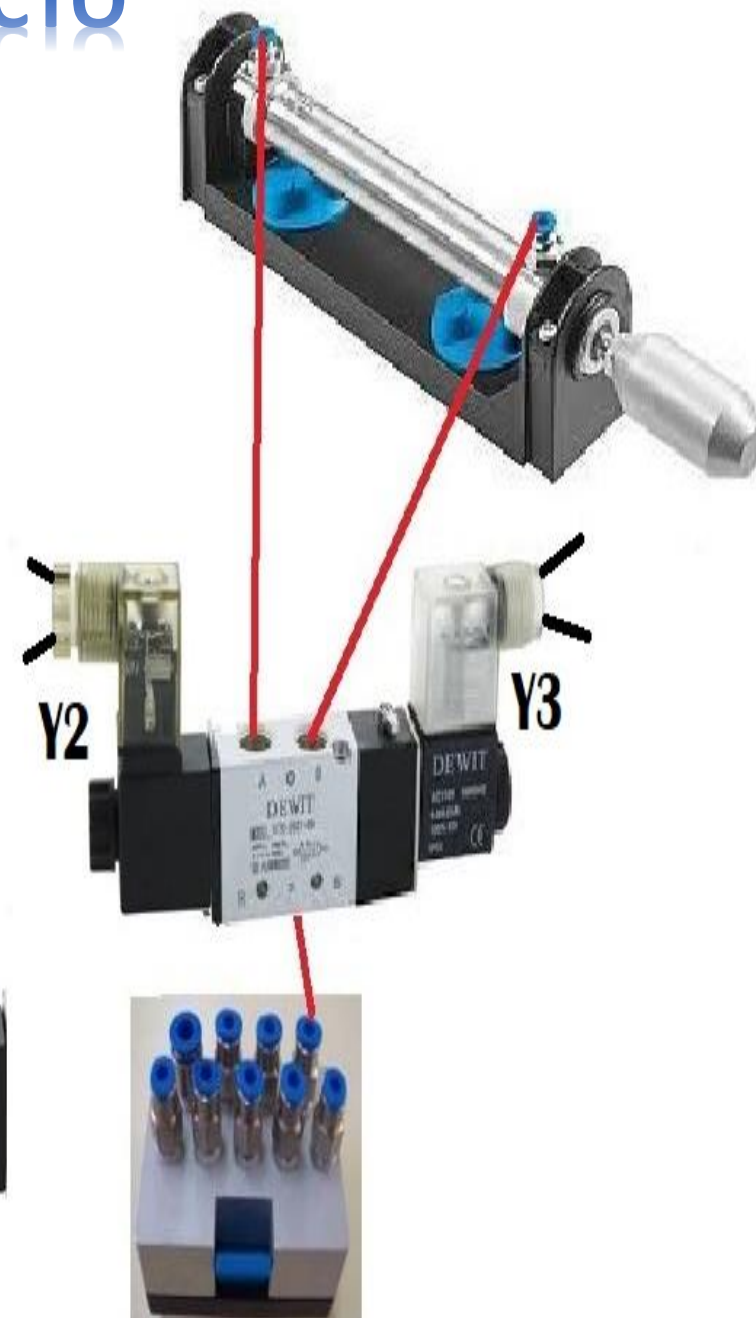
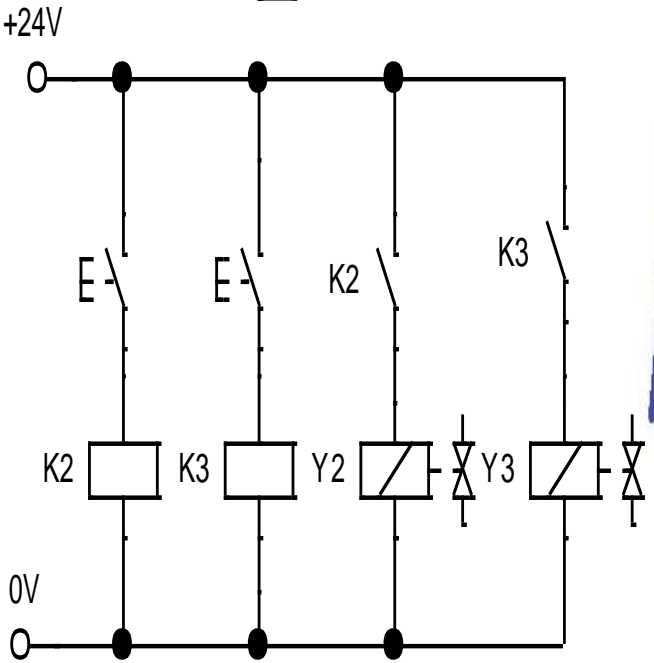
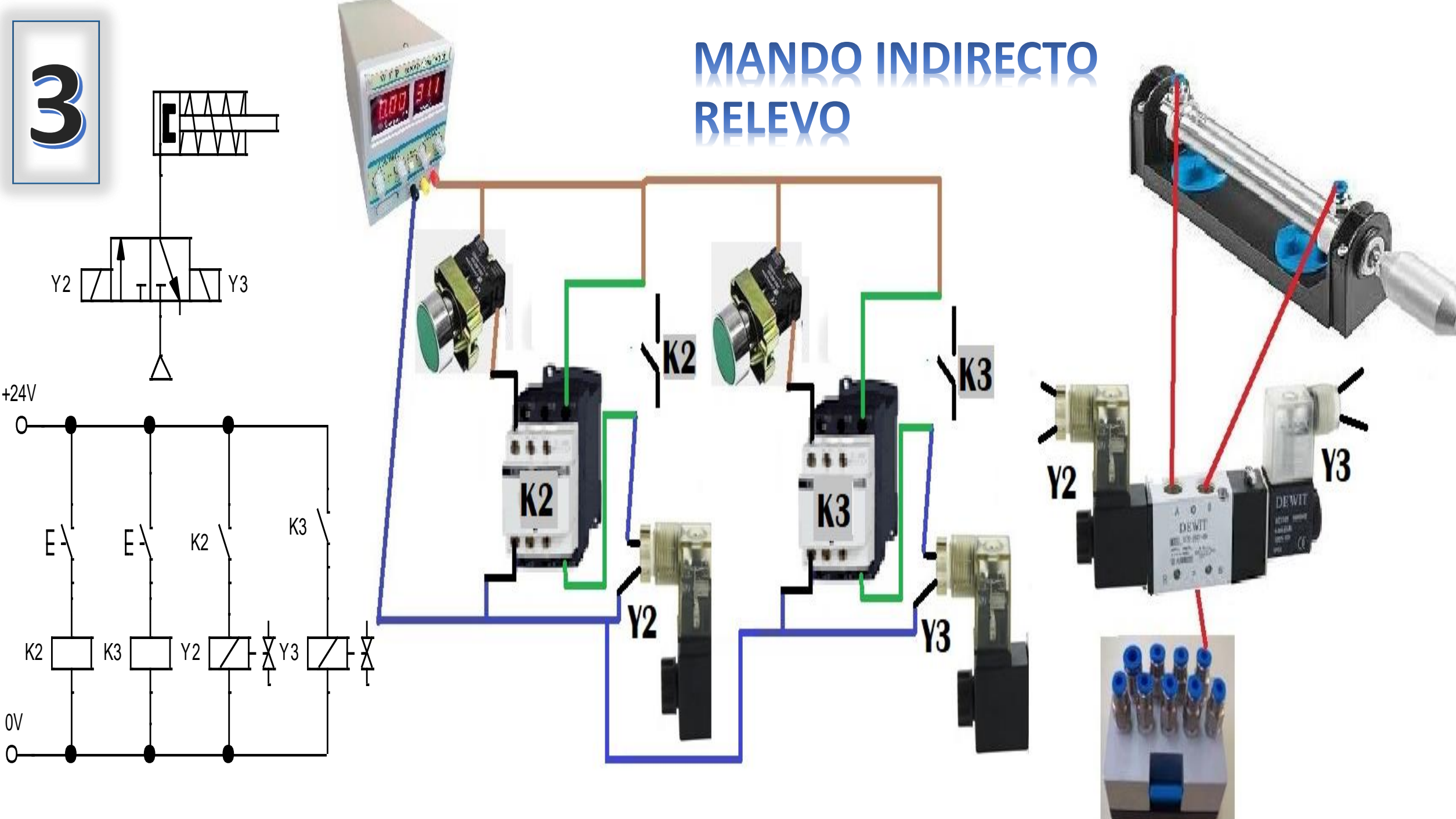
3

MANDO INDIRECTO RELEVO



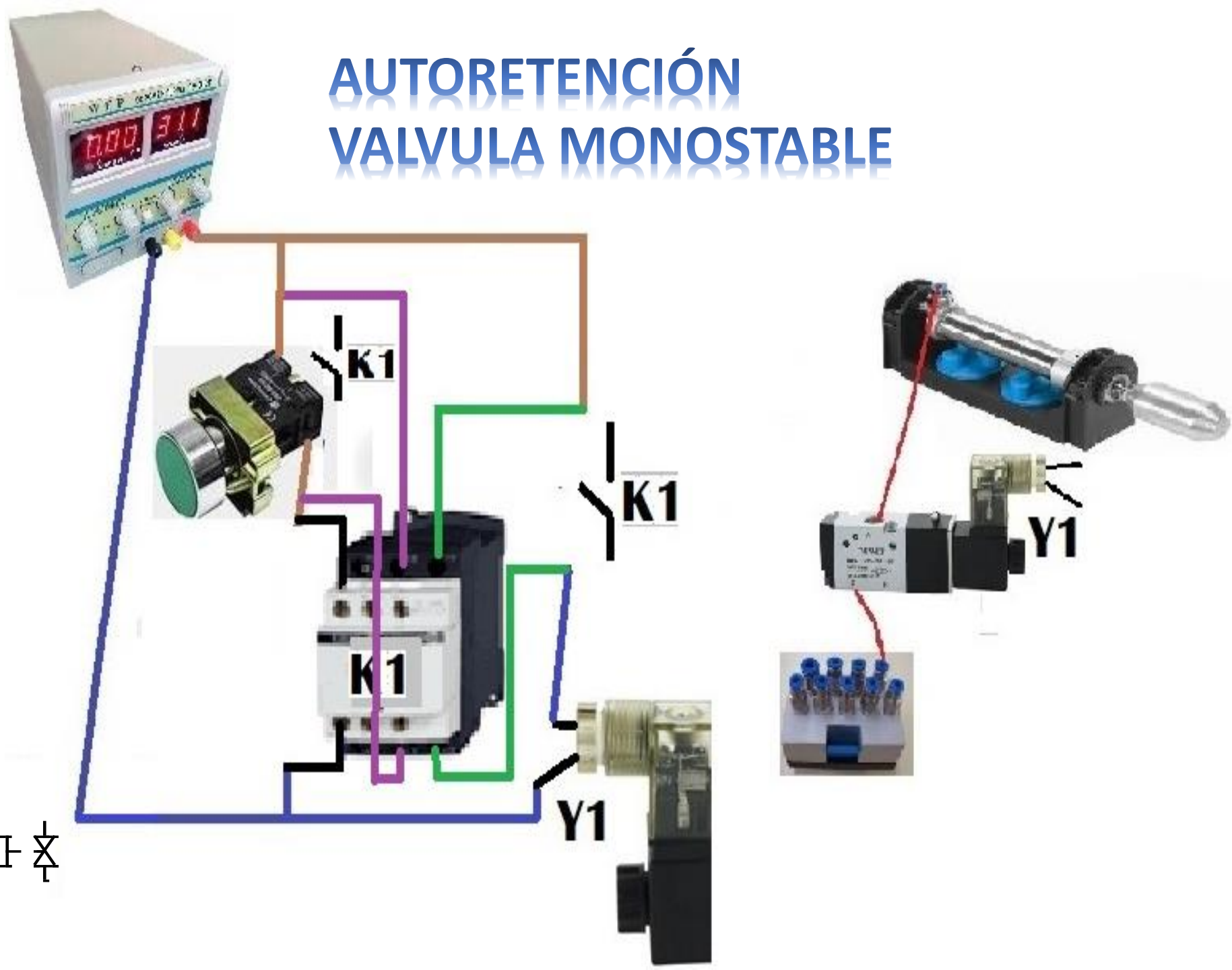
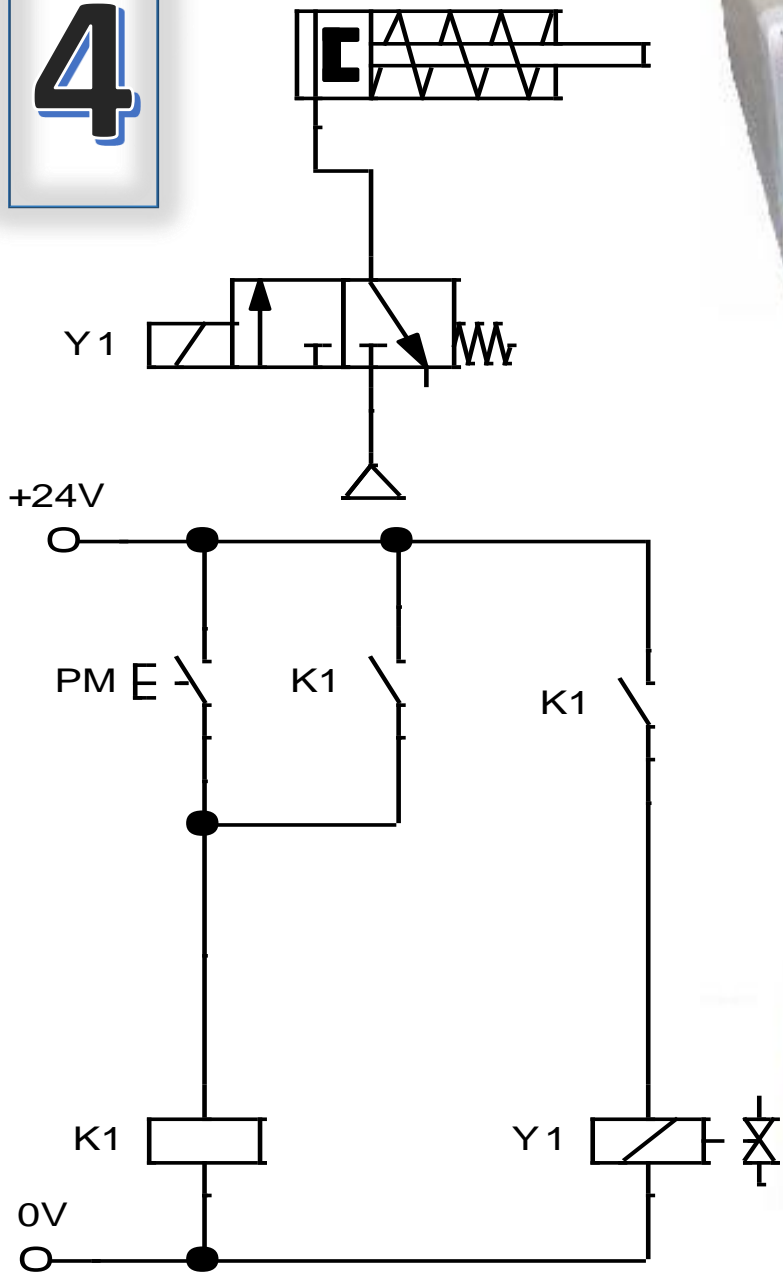
3

MANDO INDIRECTO RELEVO



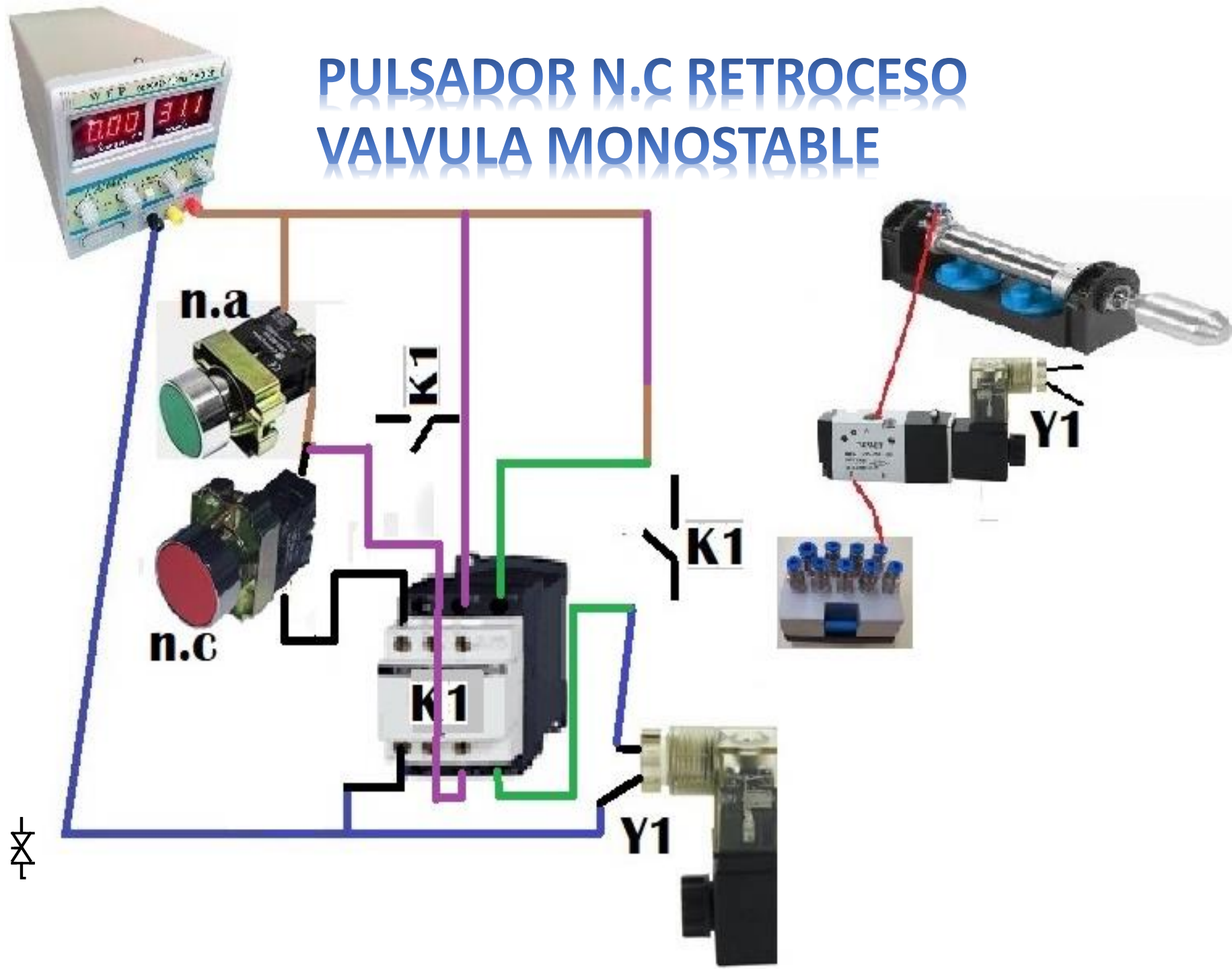
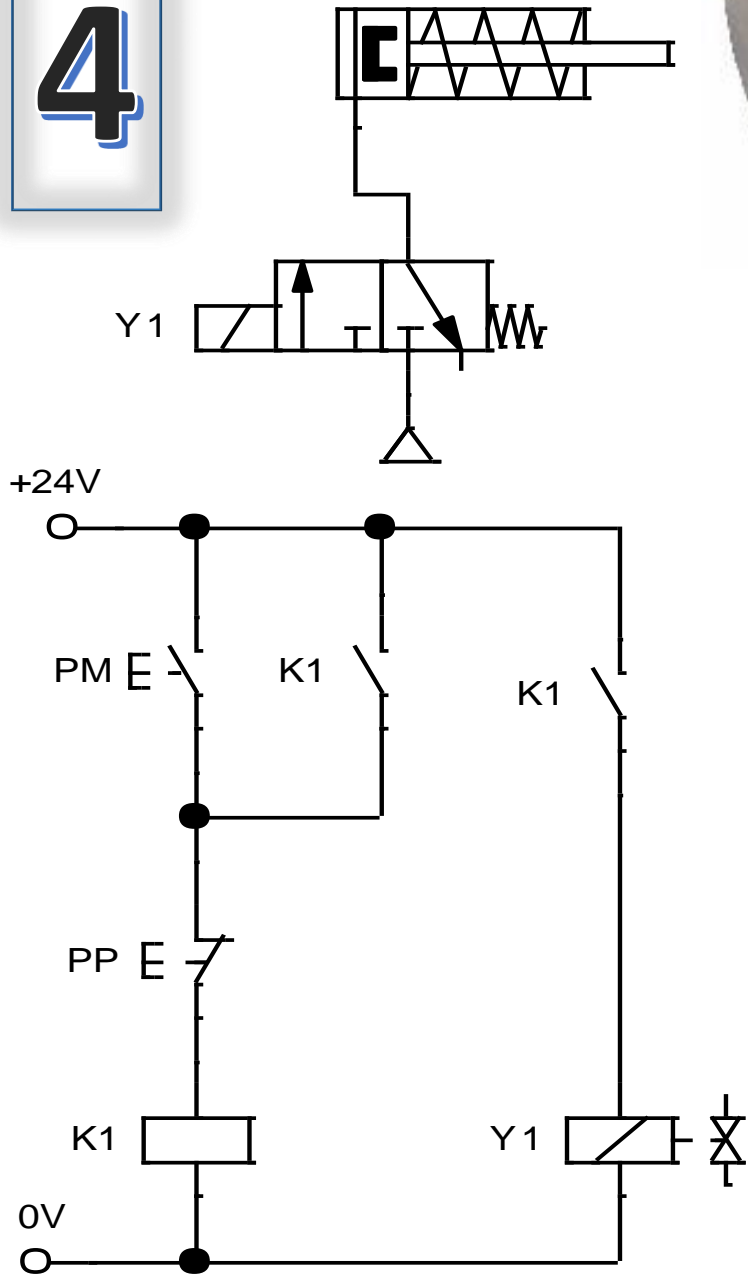
4

AUTORETENCIÓN VALVULA MONOSTABLE



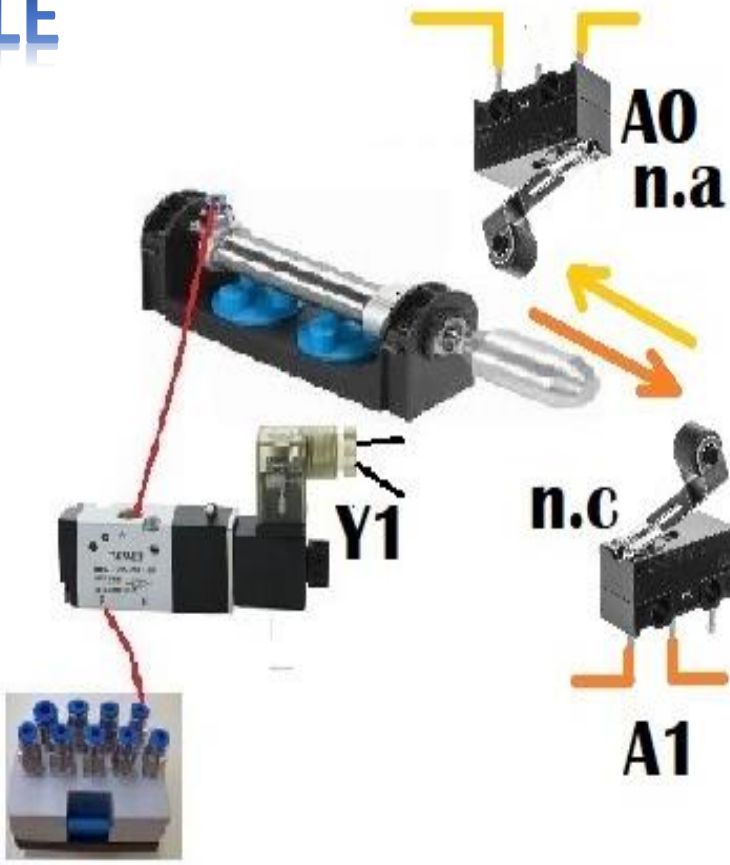
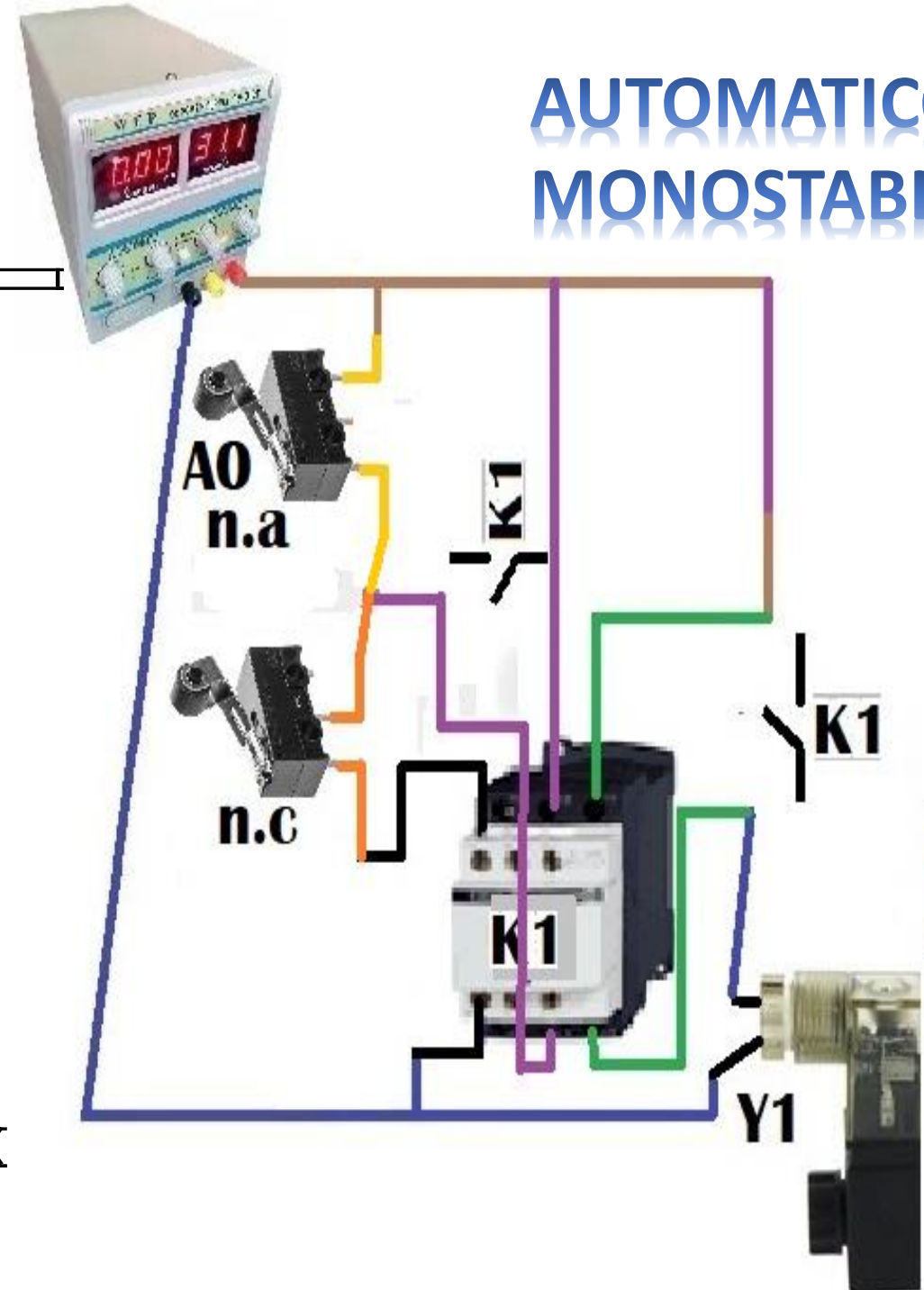
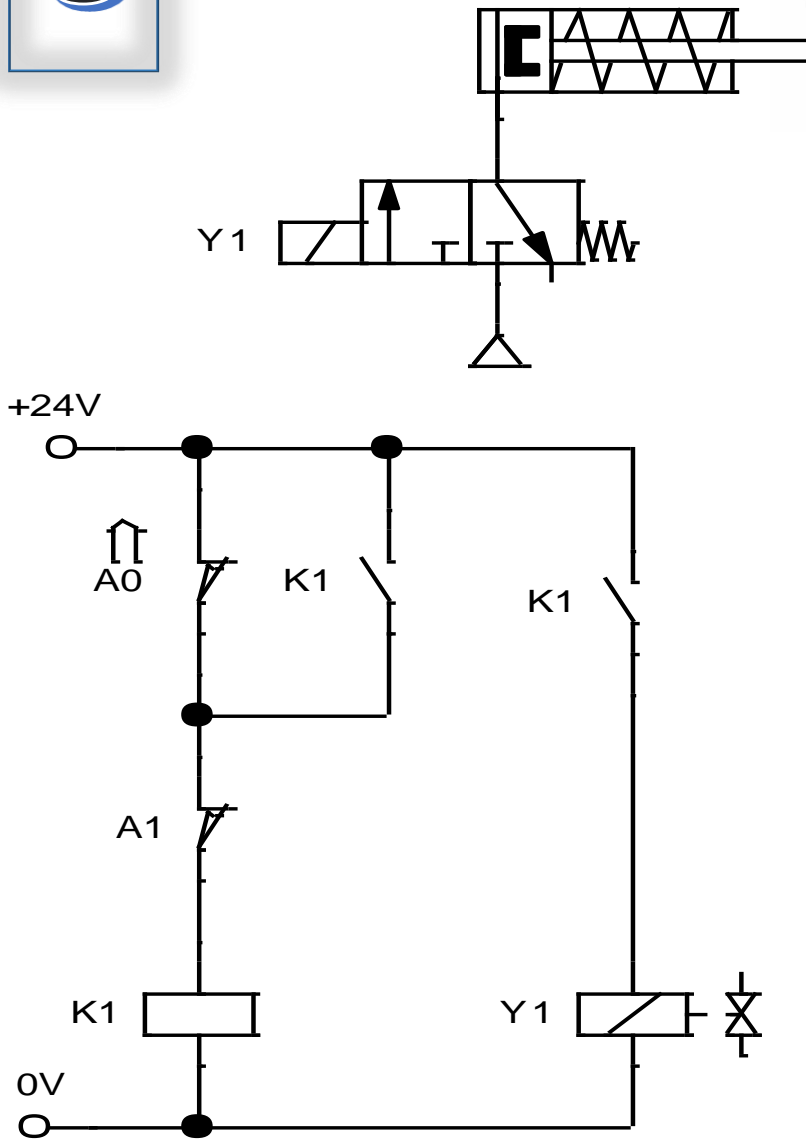
4

PULSADOR N.C RETROCESO VALVULA MONOSTABLE



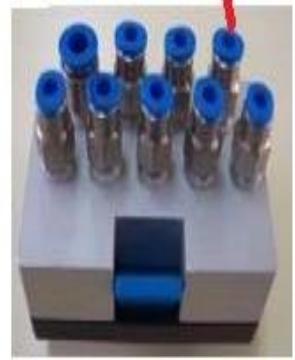
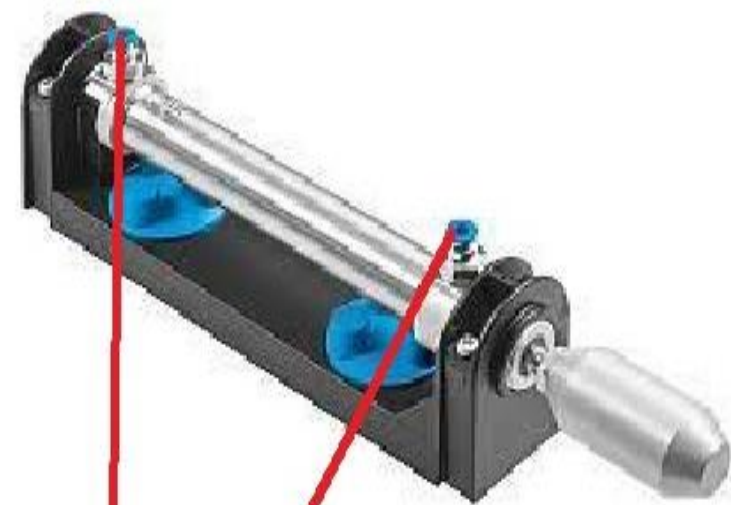
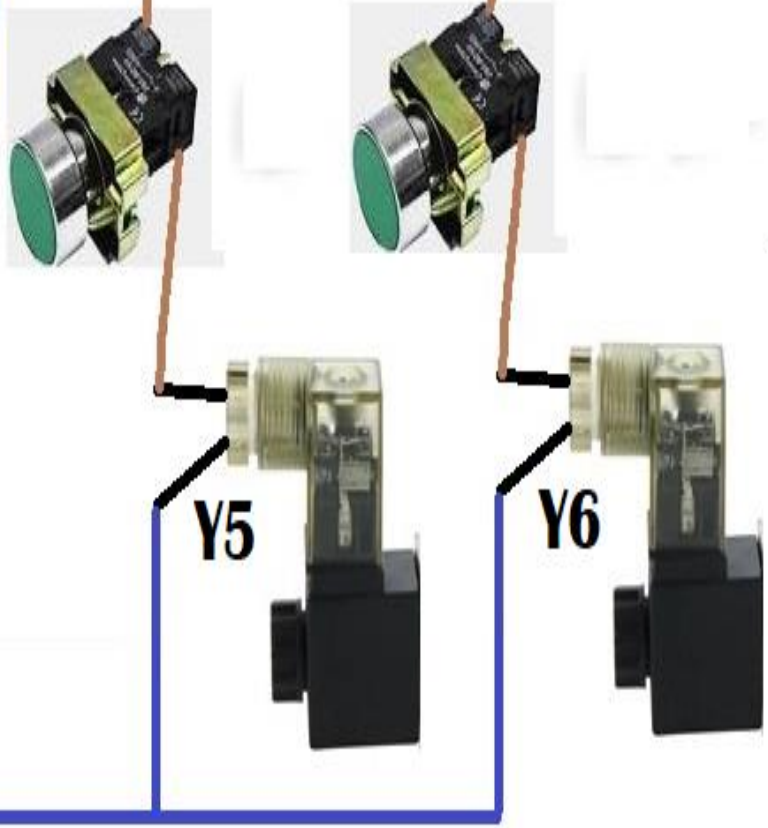
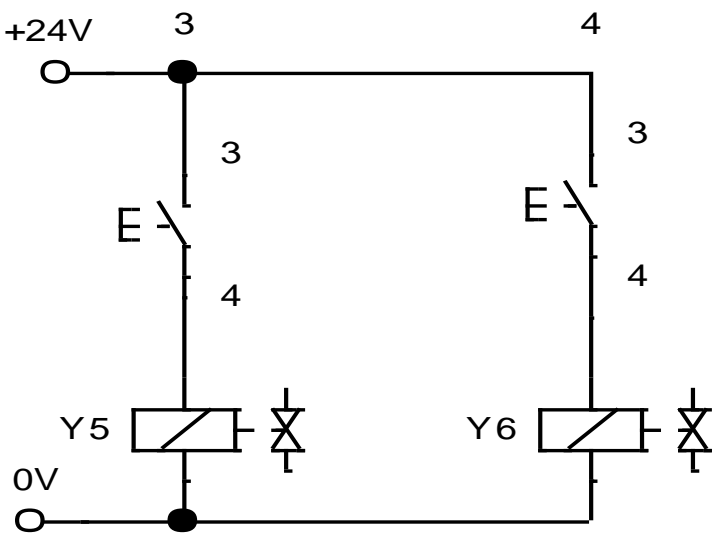
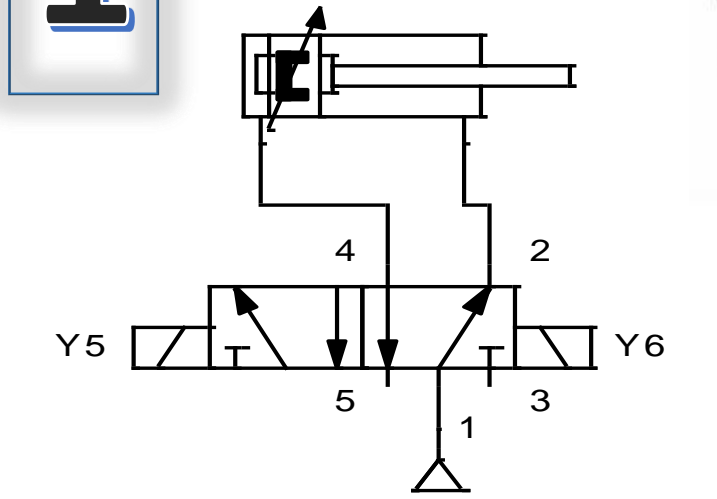
6

AUTOMATICO MONOSTABILE



1

MANDO DIRECTO

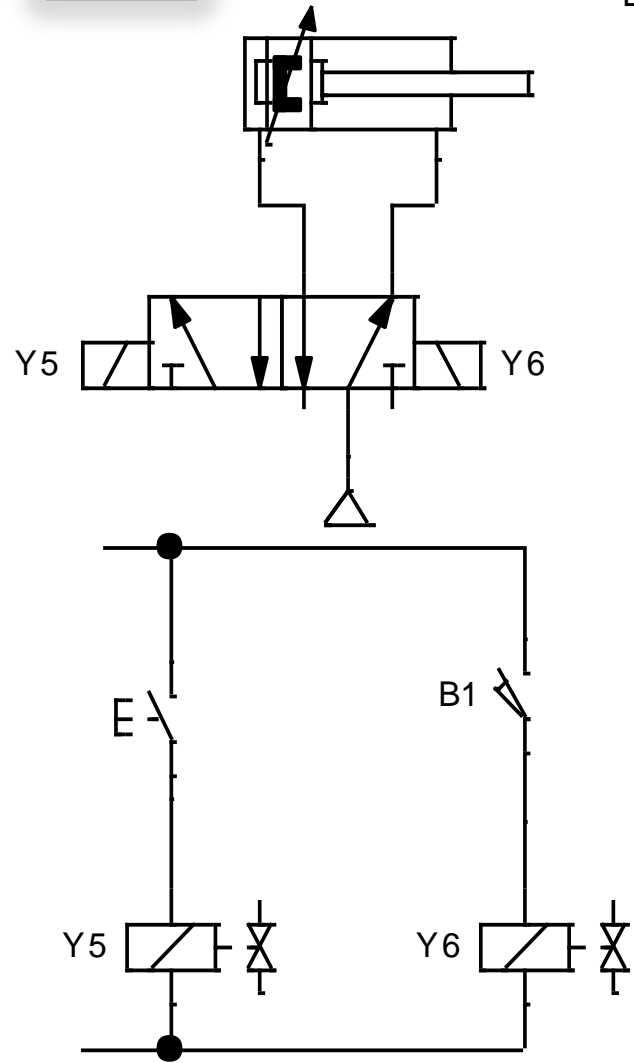
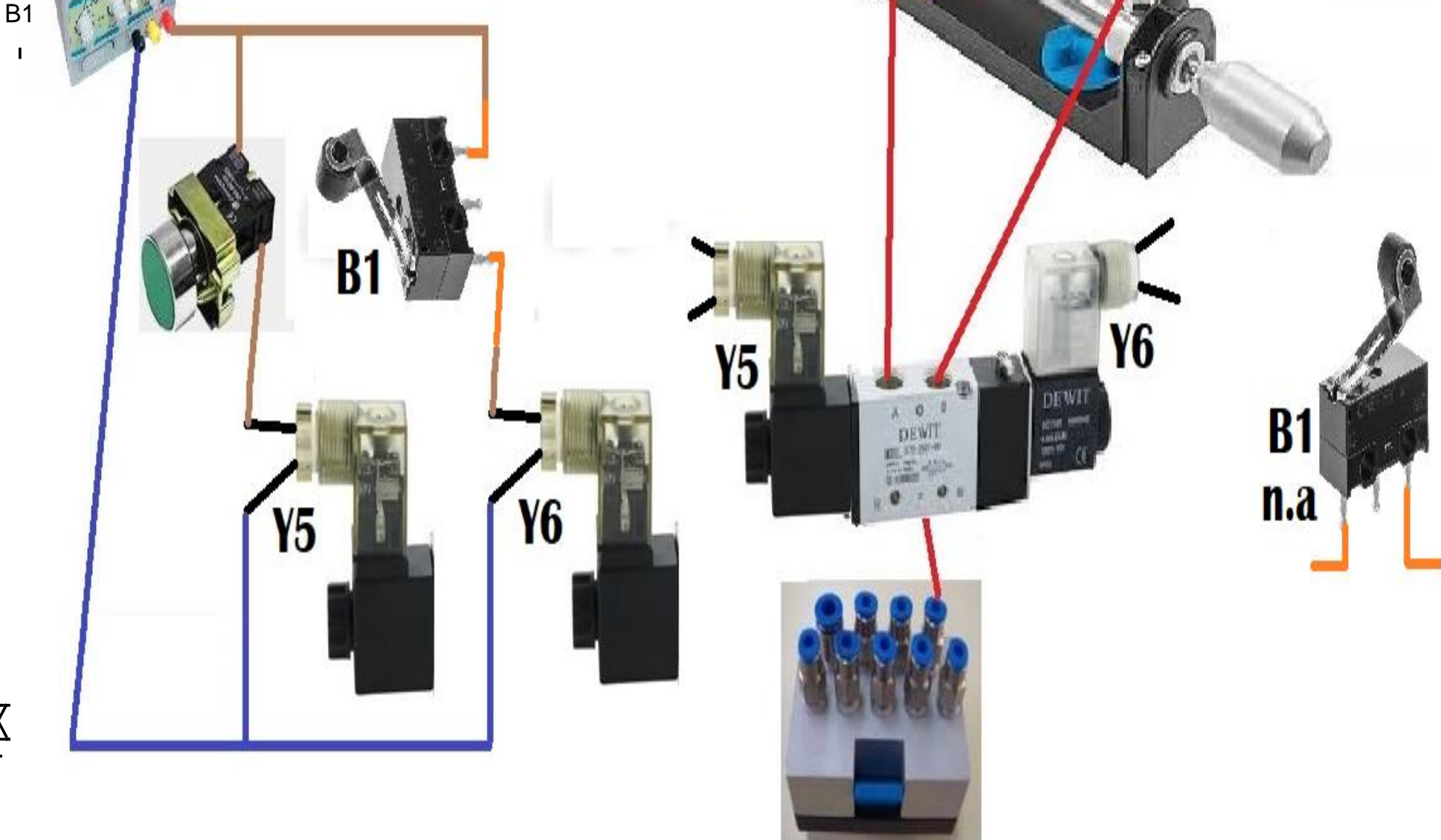


5

FINAL DE CARRERA N.A RETROCESO BIESTABLE

B1

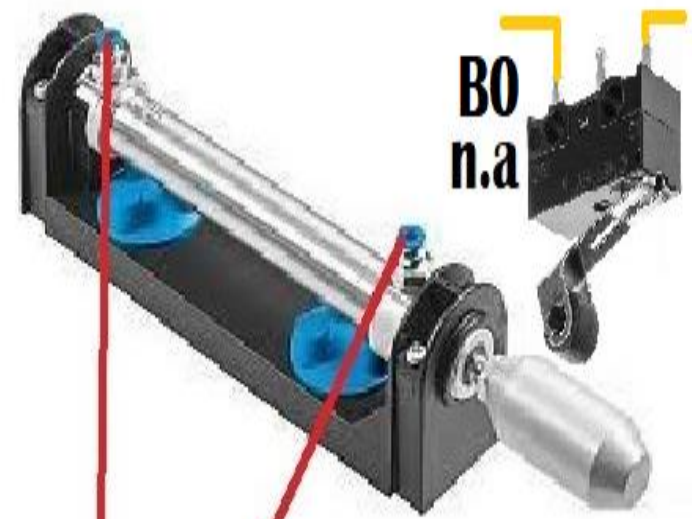
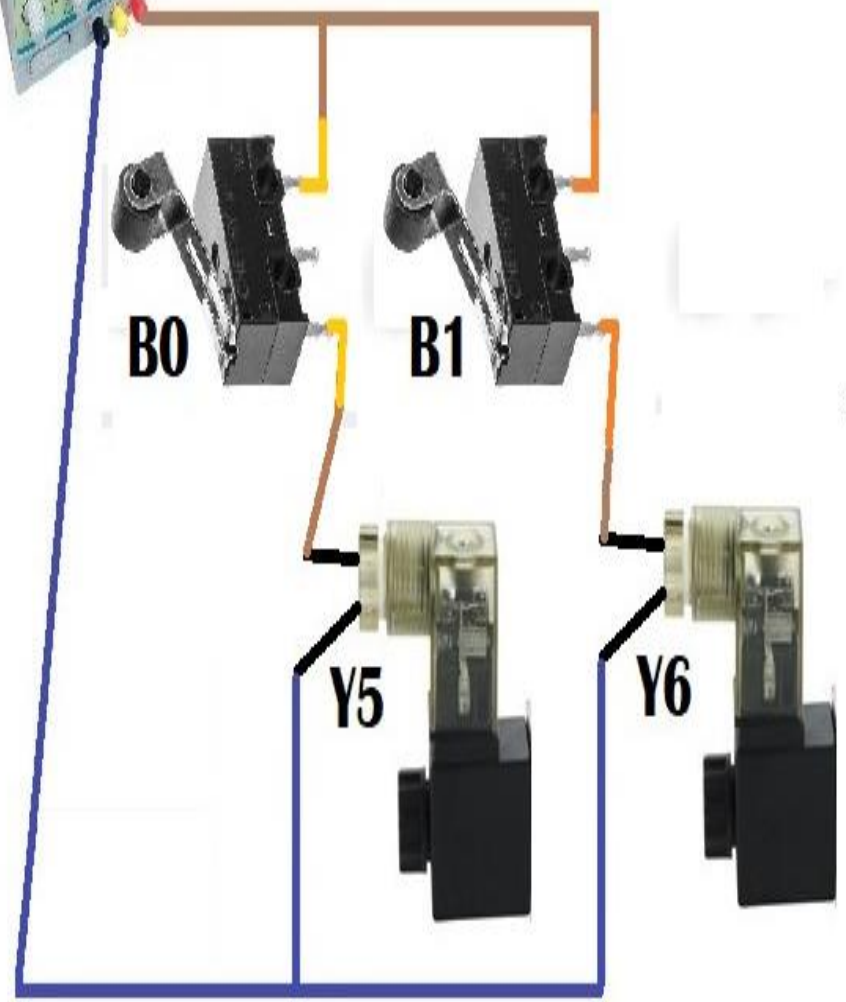
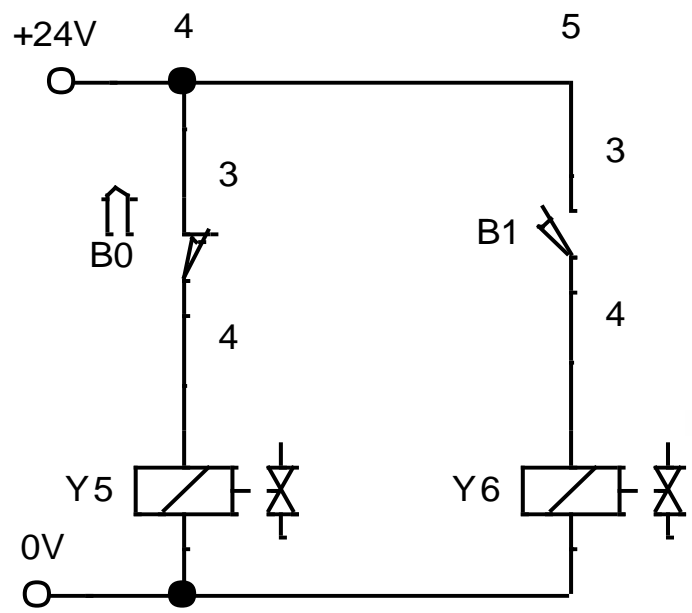
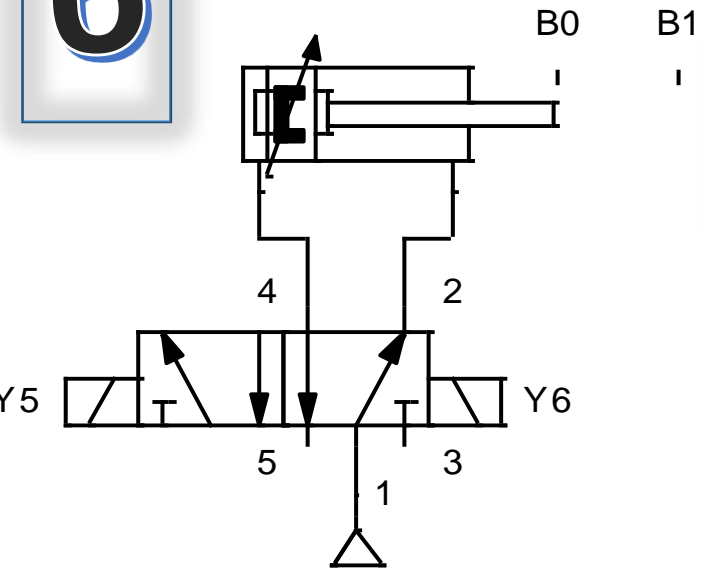
I



B1
n.a

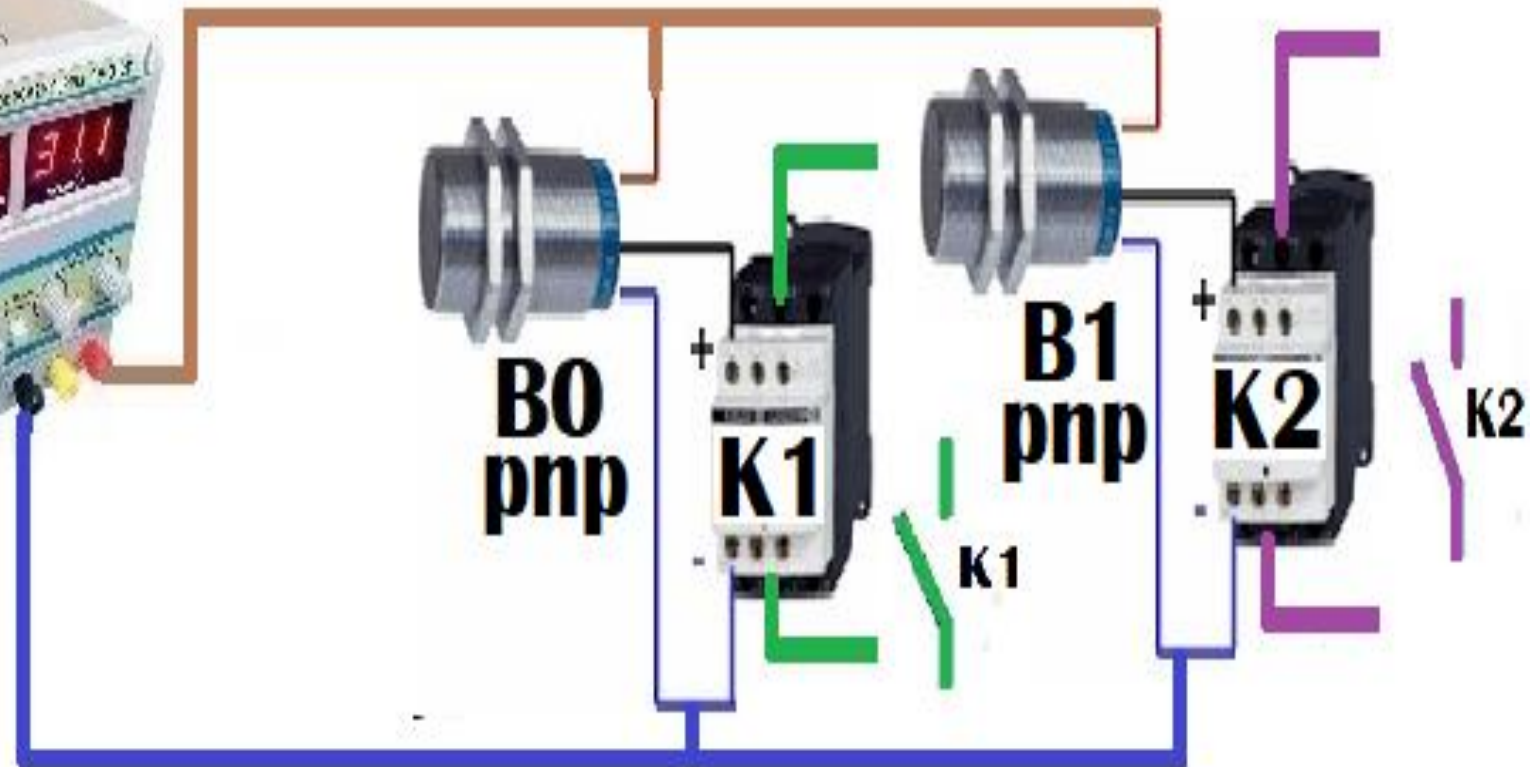
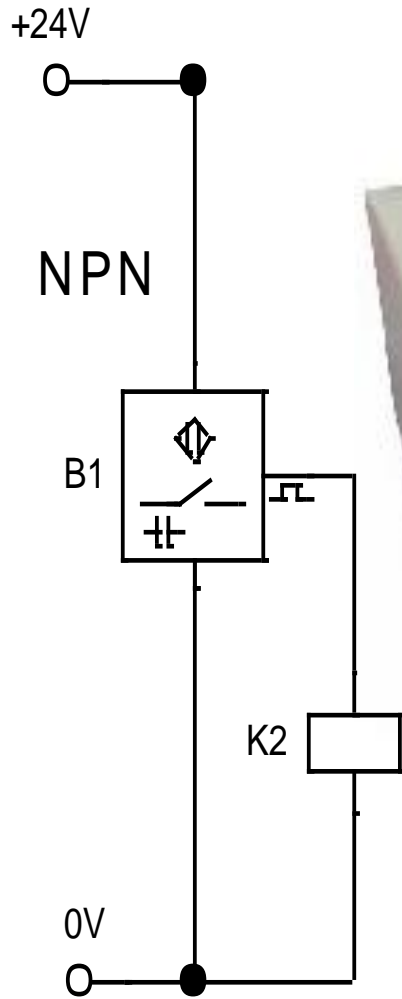
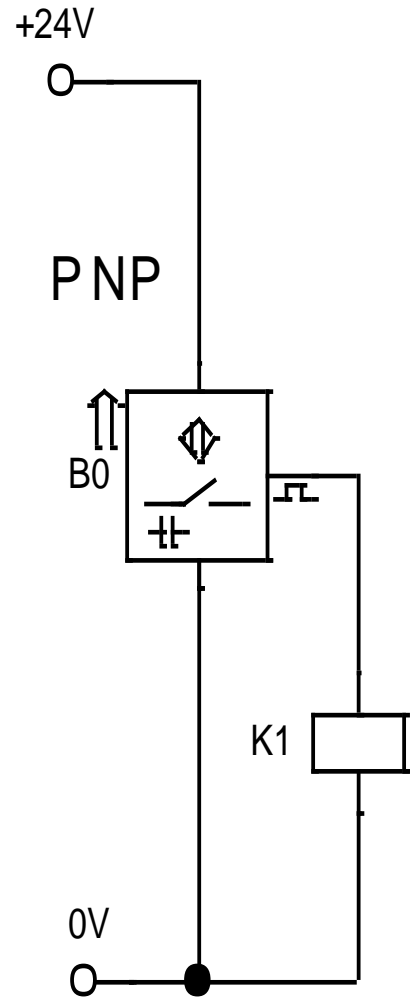
6

AUTOMATICO BIESTABLE



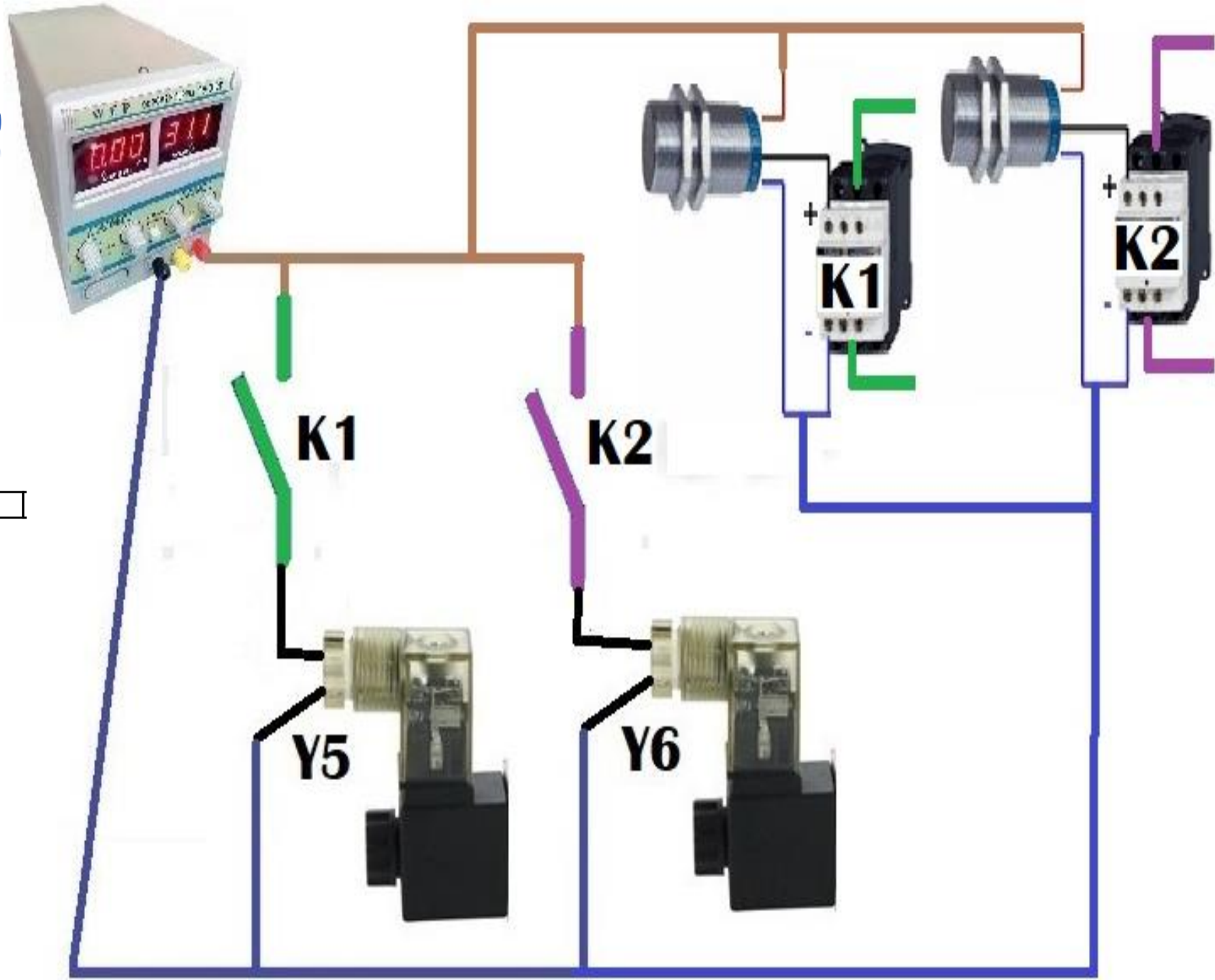
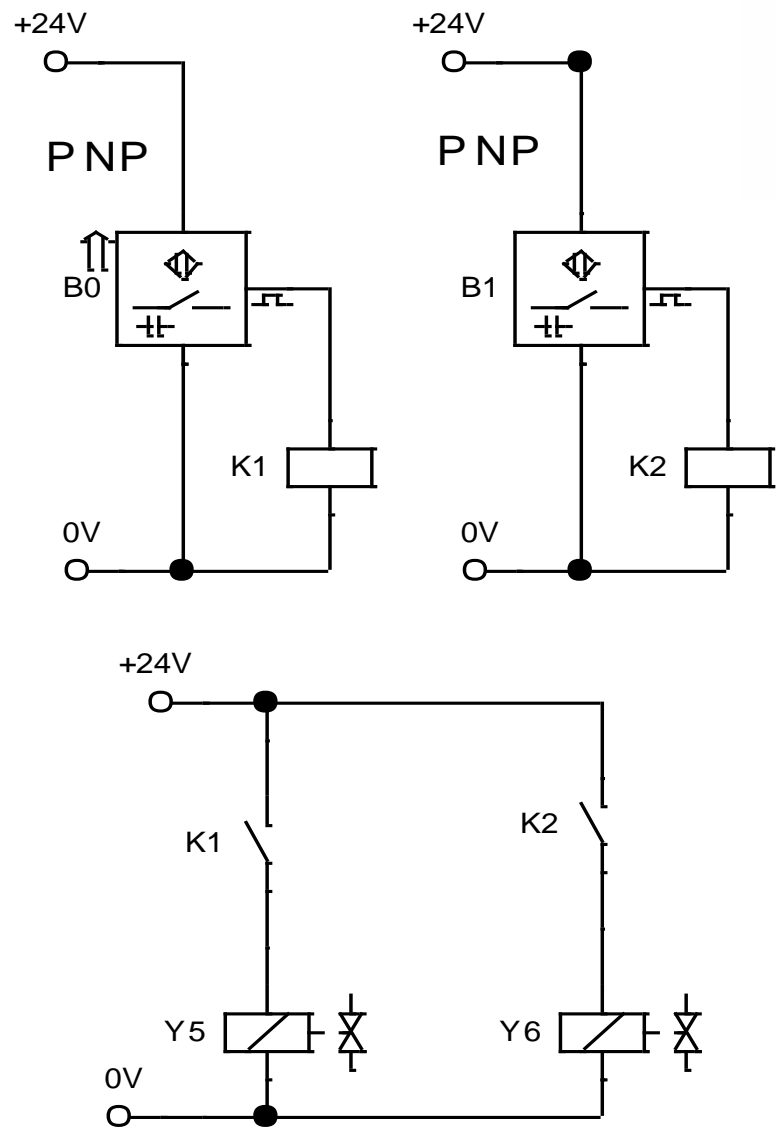
7

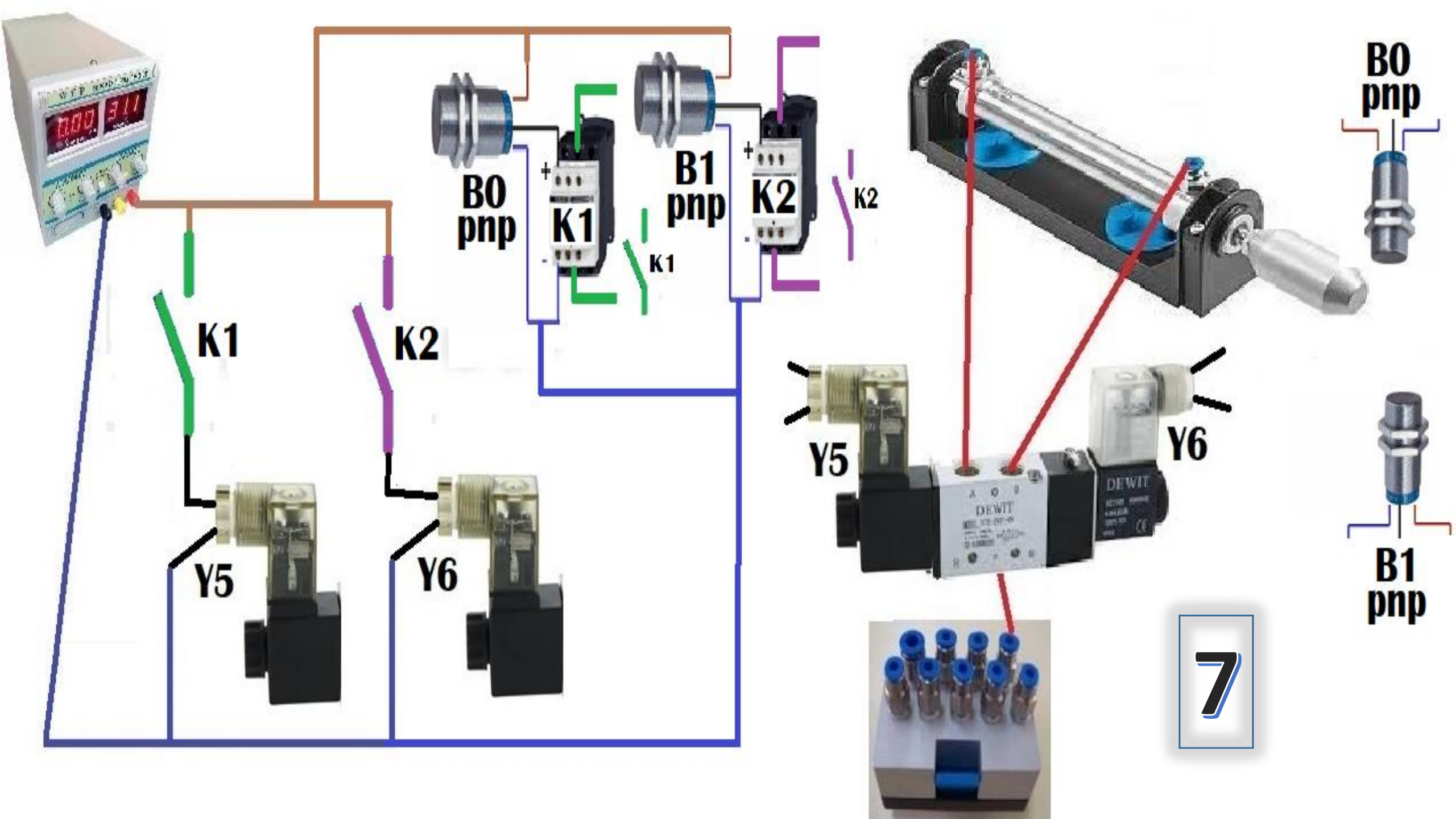
SENSOR PNP



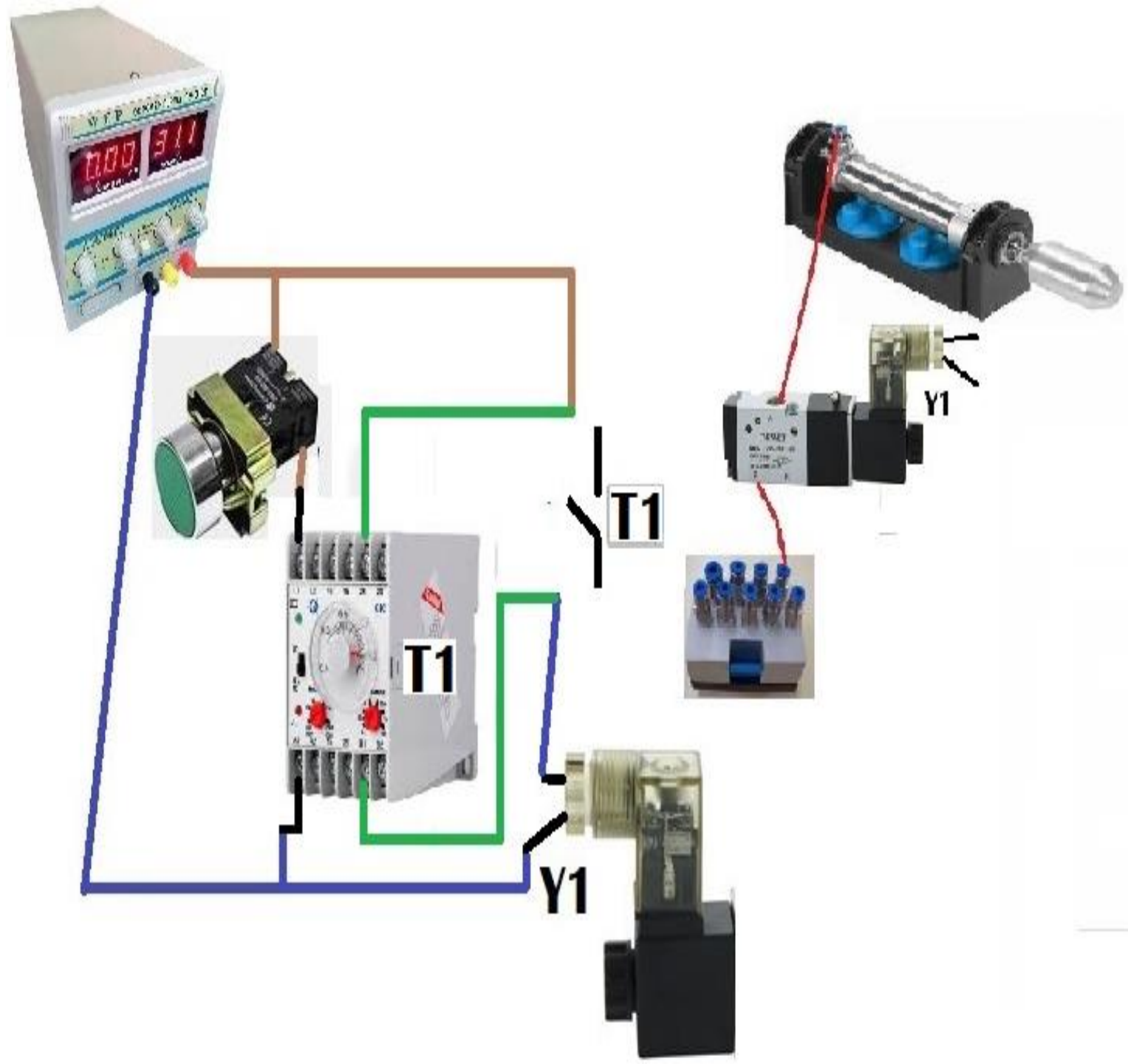
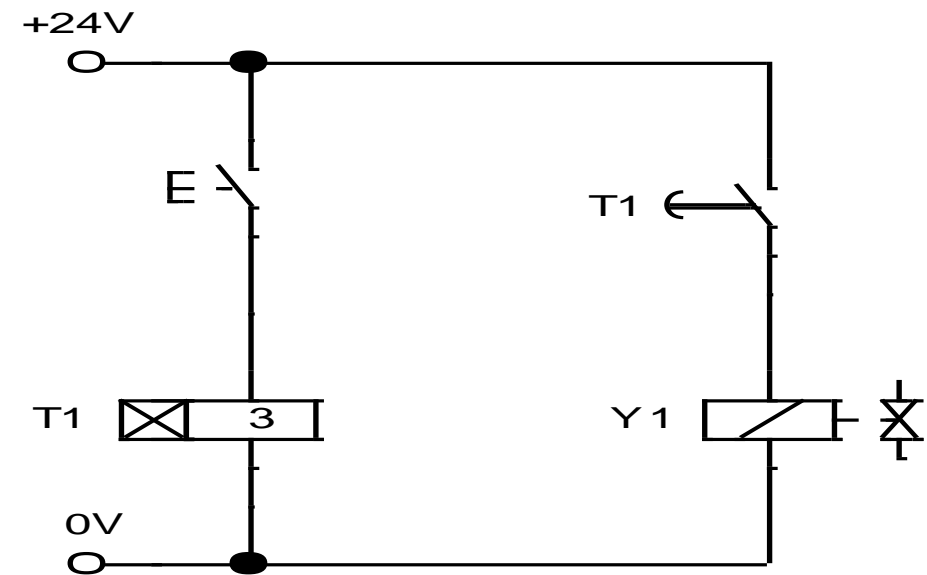
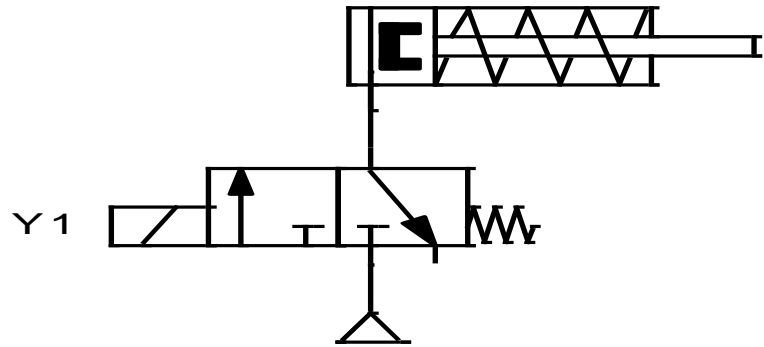
7

CONTROL RELE ASOCIADO





RELE TEMPORIZADOR ON-DELAY



RELE TEMPORIZADOR OFF-DELAY

